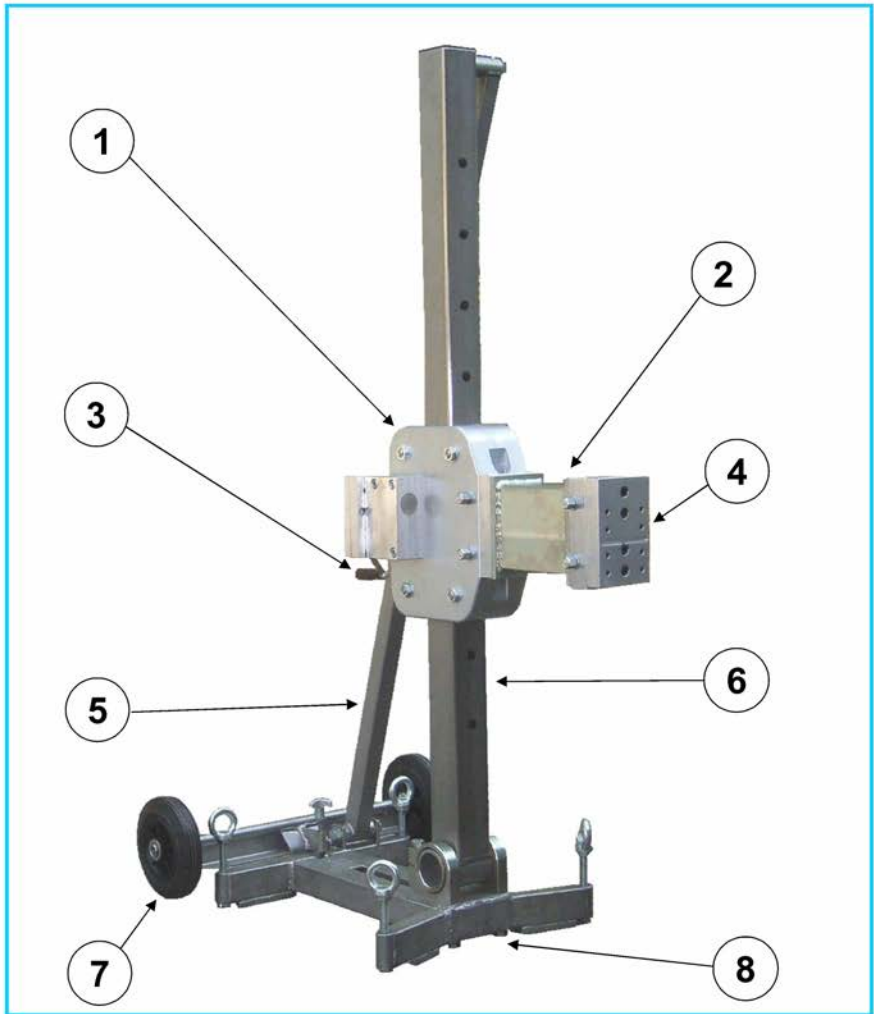
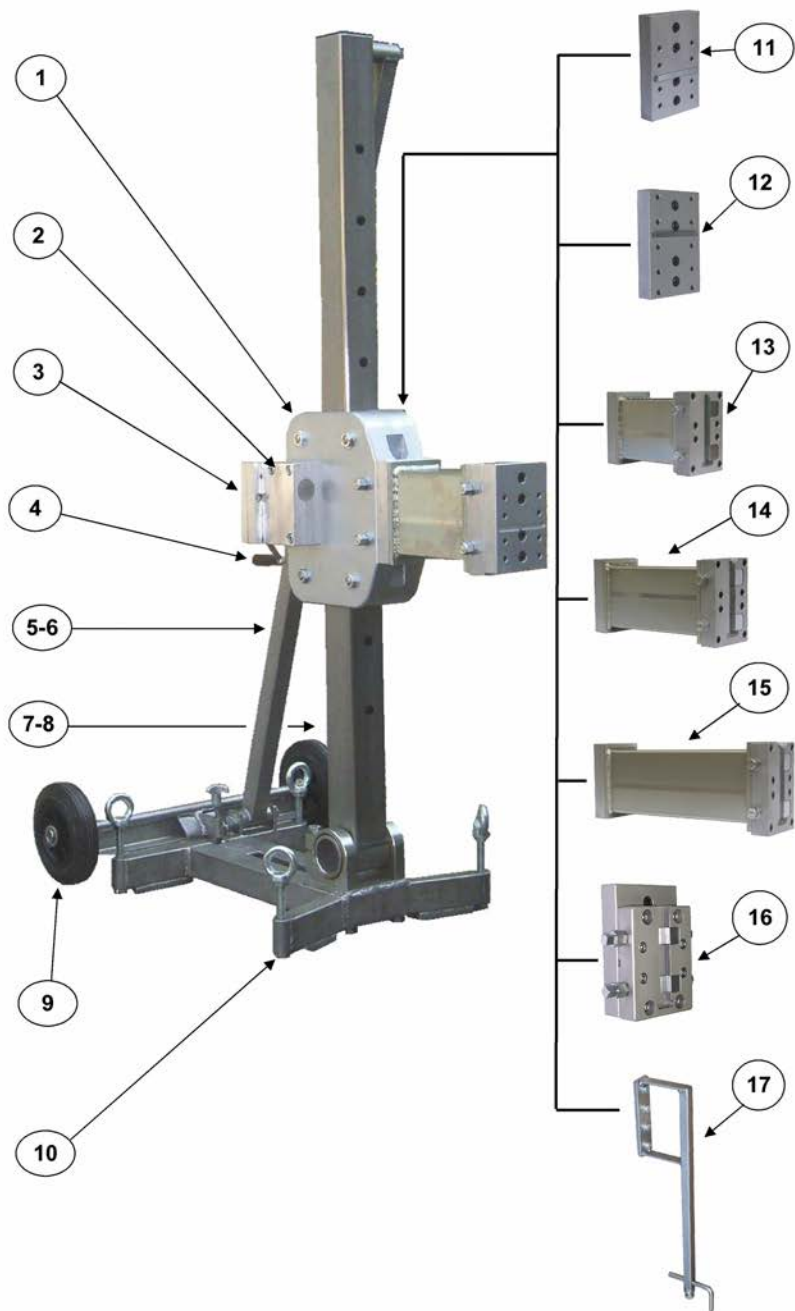


# Drill Stands KF 1000



Item	Designation	Order no.	Piece	Price/Piece
	Drill KF 1000 cpl.	KF 1000	1	
1	Carraige cpl.	1000.1.0 K	1	
2	Quick change distance piece 200mm cpl. D1000	1000.10.01 BDG K	1	
3	Crank cpl.	1000.5.0 K	1	
4	Motor plate for Weka-Engines cpl.	1000.4.0 K W	1	
5	Support 1450 mm cpl.	1000.8.0 K	1	
6	Column 1450 mm cpl.	1000.6.0 K	1	
7	Wheel kit cpl.	1000.12.0 K	1	
8	Foot plate stainless steel cpl.	1000.9.0 K	1	

# Drill Stands KF 1000



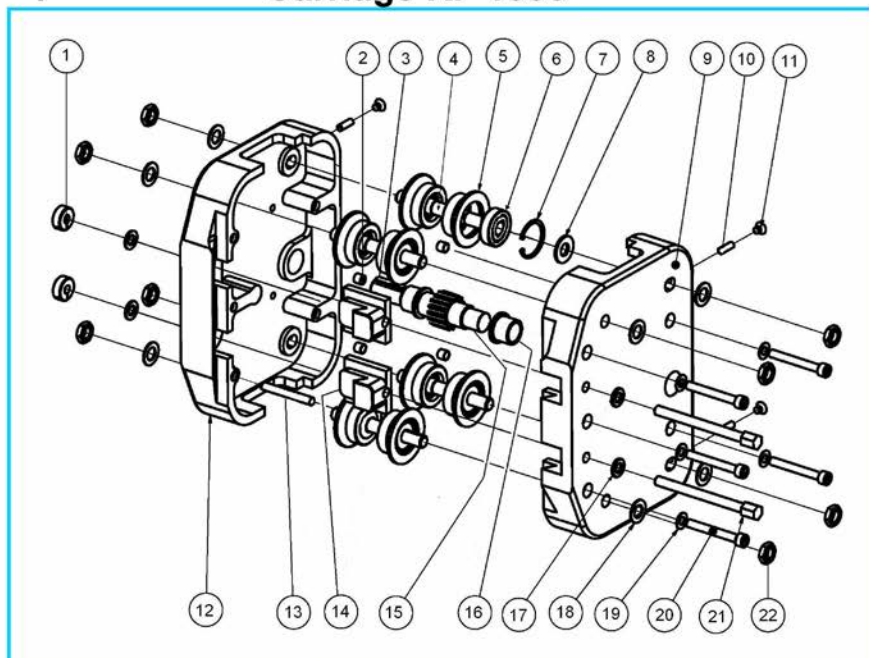
## components and parts list KF 1000

Item	Designation	Order no.	Piece	Price/Piece
1	Carraige cpl.	1000.1.0 K	1	
2	Worm gears cpl.	1000.2.0 K	1	
3	Front gear cpl.	1000.3.0 K	1	
4	Crank cpl.	1000.5.0 K	1	
5	Support 1450 mm cpl.	1000.8.0 K	1	
6	Support 2000 mm cpl.	1000.8.01 K	1	
7	Column 1450 cpl.	1000.6.0 K	1	
8	Column 2000 cpl.	1000.6.020 K	1	
9	Wheel kit cpl.	1000.12.0 K	1	
10	Foot plate stainless steel cpl.	1000.9.0 K	1	
11	Motor plate for Weka Engines cpl.	1000.4.0 K W	1	
12	Motor plate for Cardi Engines cpl.	1000.4.0 K C	1	
13	Quick change distance piece 200mm cpl. D1000	1000.10.01 BDG K	1	
14	Quick change distance piece 300mm cpl. D1200	1000.10.02 BDG K	1	
15	Quick change distance piece 400mm cpl. D1400	1000.10.03 BDG K	1	
16	Quick change adapter for Engines - 5,3 KW cpl.	1000.10.04 BG K	1	
17	Drilling middles indicator, m.d. 115-150 mm cpl.	250.10.2 K	1	

Copyright © 2015 by FleiKa Maschinen- und Anlagenbau GmbH & Co KG

Information: We reserve to make changes of our Drill stands.

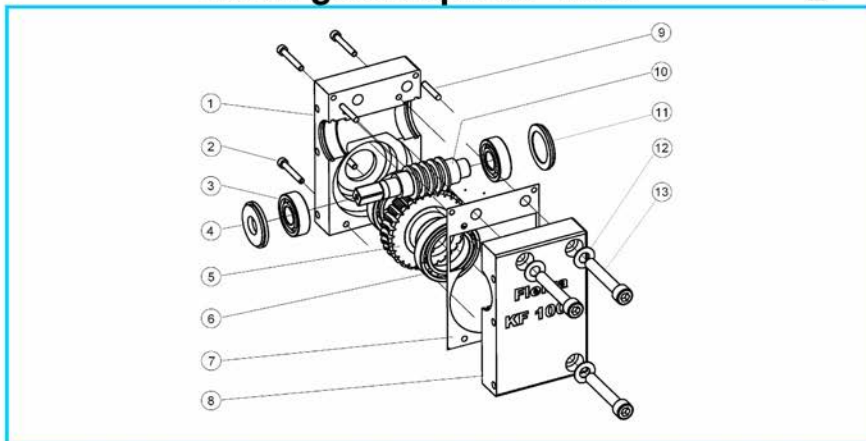
## Carriage KF 1000



Item	Designation	Order no.	Piece	Price/Piece
	<b>Carriage cpl.</b>	<b>1000.1.0 K</b>	<b>1</b>	
1	adjusting ring M 12 clamped	1000.1.12	2	
2	Fitting sleeves D 10x12	1000.1.2	5	
3	Keyway	1000.1.15	1	
4	axis	1000.1.6	4	
	<b>Rollers with ball bearing cpl.</b>	<b>1000.1.3 K</b>	<b>8</b>	
5	rollers	1000.1.3	8	
6	ball bearing 17x47x14 mm	1000.1.4	8	
7	snap ring stainless steel 47 mm	1000.1.5	8	
8	washer D 16x3	1000.1.9	8	
9	housing right	1000.1.1 R	1	
10	grub screw M 8x25	1000.1.17	4	
11	covering screw M 8x10	1000.1.18	4	
12	housing left	1000.1.1 L	1	
13	cylindrical D 10x80	1000.1.19	1	
14	stretching block	1000.1.10	2	
15	spline shaft	1000.1.14	1	
16	bearing bush D 25	1000.1.16	2	
17	washer D 12	1000.1.13	4	
18	spring washer D 16	1000.1.8	8	
19	spring washer D 10	250.16.05	5	
20	nut M 10x80	1000.1.20	5	
21	adjusting screw M 12x160	1000.1.11	2	
22	nut flat M 16	1000.1.7	8	

## Worm gears cpl. KF 1000

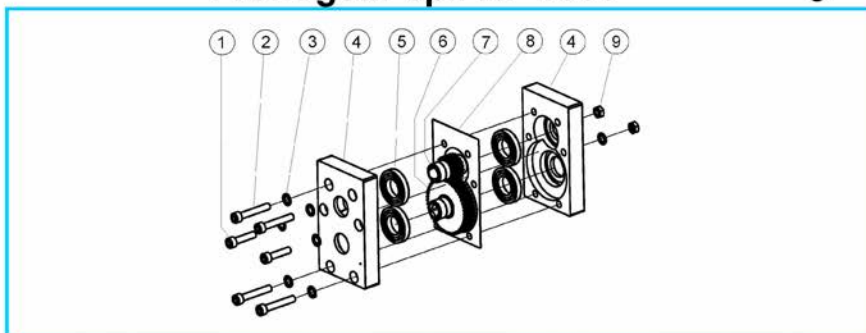
2



Item	Designation	Order no.	Piece	Price/Piece
	<b>Worm gears cpl.</b>	<b>1000.2.0 K</b>	<b>1</b>	
1	housing worm inside	1000.2.1-I	1	
2	screw M 5x30	1000.2.9	3	
3	ball bearing 17x40 mm	1000.2.3	2	
4	end cap behind 42x18x3 mm	1000.2.4	1	
5	worm	1000.2.6	1	
6	ball bearing 40x62x12 mm	1000.2.7	2	
7	seal 95x150x0,02 mm	1000.2.11	1	
8	housing worm outside	1000.2.1-A	1	
9	cylindrical pin 5x20	1000.2.12	3	
10	worm shaft	1000.2.2	1	
11	end cap front 42x3mm	1000.2.5	1	
12	spring washer D 10	250.16.05	3	
13	screw M 10x60	1000.2.8	3	

## Front gear cpl. KF 1000

3

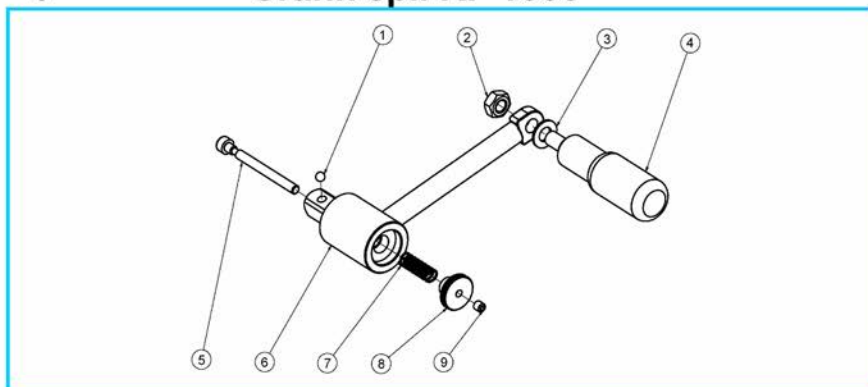


Item	Designation	Order no.	Piece	Price/Piece
	<b>Front gear cpl.</b>	<b>1000.3.0 K</b>	<b>1</b>	
1	screw M 8x35	250.1.33	2	
2	screw M 8x50	150.11.4	4	
3	spring washer D 8	250.1.29	6	
4	Housing fron gear	1000.3.1	2	
5	ball bearing 25x47x8 mm	1000.3.5	4	
6	gear ratio 48 Z	1000.3.4	1	
7	gear ratio 20 Z	1000.3.3	1	
8	seal 90x150	1000.3.7	1	
9	nut M 8	1000.3.9	2	



4

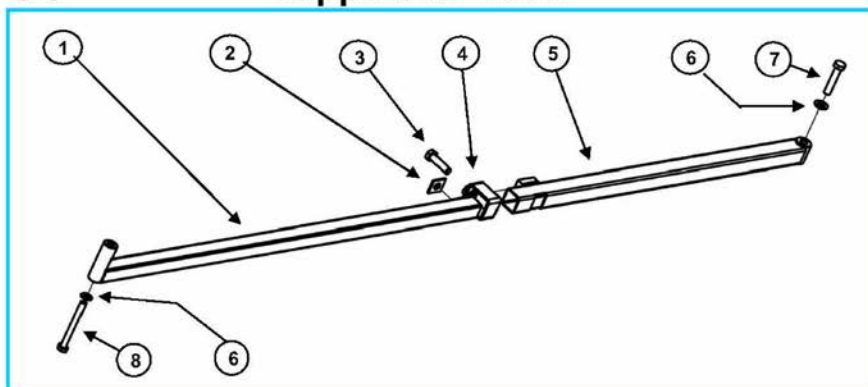
## Crank cpl. KF 1000



Item	Designation	Order no.	Piece	Price/Piece
1	ball D 5	1000.5.4	1	
2	nut M 8	1000.5.7	1	
3	washer D 8	1000.5.8	2	
4	rotary handle	1000.5.2	1	
5	pressure pin screw M 5x60	1000.5.3	1	
6	crank body	1000.5.1	1	
7	compression spring	1000.5.5	1	
8	push button locking nut M 5	1000.5.6	1	
9	screw M 5x5	1000.5.9	1	

5-6

## Support KF 1000



5

## Support 1450 mm cpl.

Item	Designation	Order no.	Piece	Price/Piece
1	supporting guider D 35x35x2x960 mm	1000.8.5	1	
2	spring	1000.8.3	1	
3	screw M 16x25 mm	1000.8.4	1	
4	span clamp with nut M 16	1000.8.2	1	
5	supporting guide 40x40x2x920mm	1000.8.1	1	
6	spring washer D 12	250.1.4	2	
7	screw M 16x110	1000.8.8	1	
8	screw M 16x100	1000.8.6	1	

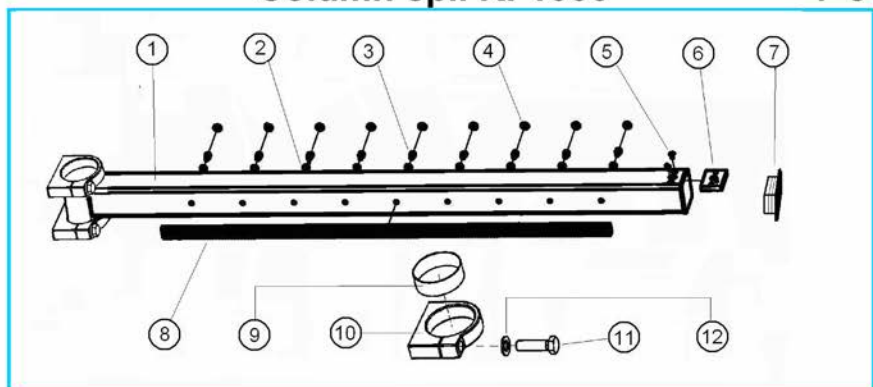
## Support 2000 mm cpl.

**6**

Item	Designation	Order no.	Piece	Price/Piece
1	supporting guider D 35x35x2x1560 mm	1000.8.7	1	
2	spring	1000.8.3	1	
3	screw M 16x25	1000.8.4	1	
4	span clamp with nut M 16	1000.8.2	1	
5	supporting guide 40x40x2x920 mm	1000.8.1	1	
6	spring washer D 12	250.1.4	2	
7	screw M 16x110	1000.8.8	1	
8	screw M 16x100	1000.8.6	1	

## Column cpl. KF1000

**7-8**



## Column 1450 cpl. with flexible bracket

**7**

Item	Designation	Order no.	Piece	Price/Piece
1	guide bar 1450 mm	1000.6.1	1	
2	spring washer D 8	250.6.4	9	
3	screw M 8x14	1000.6.3	9	
4	blindlystopfel D 14	1000.6.4	9	
5	countersunk screw M 6x10	1000.6.6	2	
6	mounting plate	1000.6.5	1	
7	end cap	1000.6.7	1	
8	gear rack Mo 2,5x1099	1000.6.2	1	
	Flexible bracket cpl.	1000.7.0 K	2	
9	brass ring	1000.7.2	2	
10	Flexible bracket	1000.7.1	2	
11	screw M 16x60	1000.7.3	2	
12	washer D 16 schmal	1000.7.4	2	

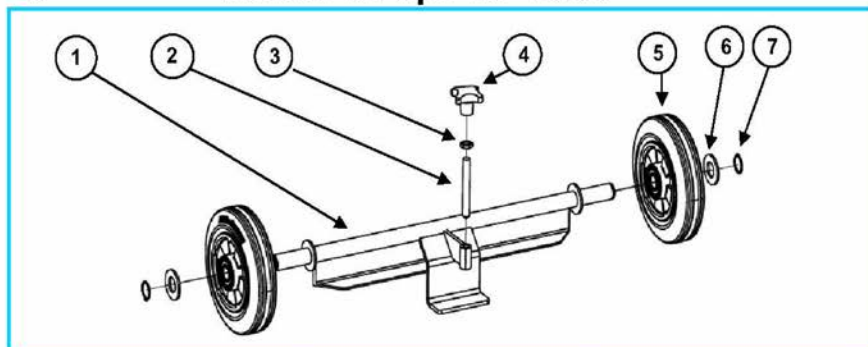
## Column 2000 cpl. with flexible bracket

**8**

Item	Designation	Order no.	Piece	Price/Piece
1	guide bar 2000 mm	1000.6.02	1	
2	spring washer D 8	250.6.4	14	
3	screw M 8x14	1000.6.3	14	
4	blindlystopfel D 14	1000.6.4	14	
5	countersunk screw M 6x10	1000.6.6	2	
6	mounting plate	1000.6.5	1	
7	end cap	1000.6.7	1	
8	gear rack Mo 2,5x1099 u. 2,5x700	1000.6.2	1	
	Flexible bracket cpl.	1000.7.0 K	2	
9	brass ring	1000.7.2	2	
10	Flexible bracket	1000.7.1	2	
11	screw M 16x60	1000.7.3	2	
12	washer D 16 schmal	1000.7.4	2	

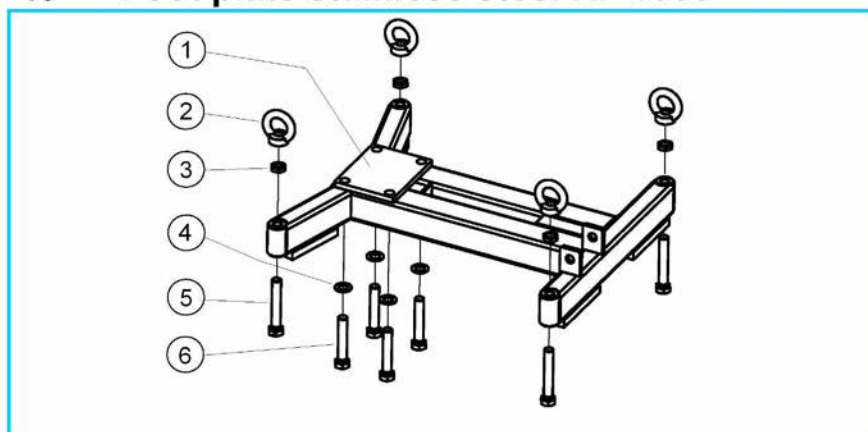
9

## Wheel kit cpl. KF 1000



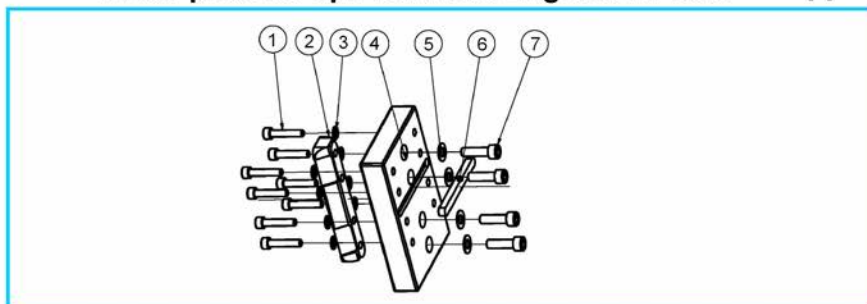
Item	Designation	Order no.	Piece	Price/Piece
1	wheel kit body	1000.12.1	1	
2	threaded bolts M 12x100	1000.12.6	1	
3	nut flat M 12x7	250.1.3	1	
4	star knob M 12	250.4.3	1	
5	wheels 200x50x25	1000.12.2	2	
6	washer D 25	1000.12.4	2	
7	snap ring D 25	1000.12.5	2	

## 10 Foot plate stainless steel KF 1000

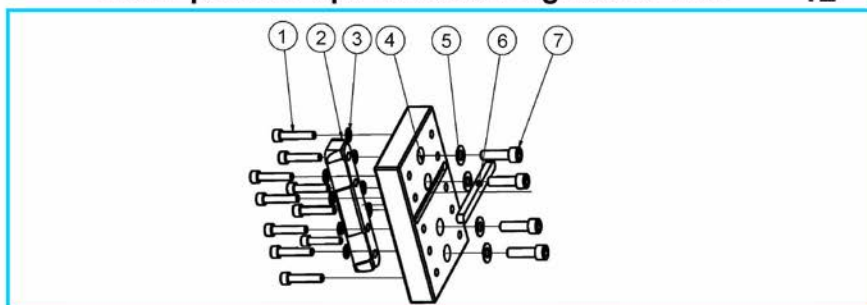


Item	Designation	Order no.	Piece	Price/Piece
1	foot plate body stainless steel	1000.9.1	1	
2	nut M 16	1000.9.3	4	
3	nut flat M 16	1000.1.7	4	
4	spring washer D 16	1000.9.6	4	
5	adjusting screw M 16x140	1000.9.2	4	
6	screw M 16x90	1000.9.5	4	



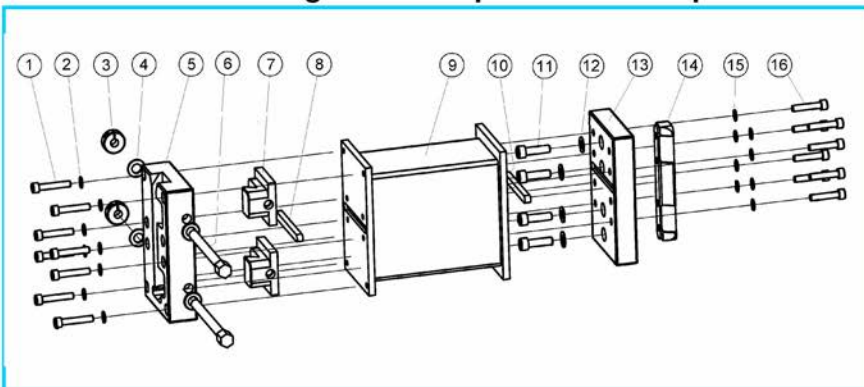


Item	Designation	Order no.	Piece	Price/Piece
	<b>Drilling motor plate for Weka Engines</b>	<b>1000.4.0 K W</b>	<b>1</b>	
1	screw M 8x40 / 12.9	1000.4.4	8	
2	straining beam	1000.4.2	1	
3	spring washer D 8	250.1.29	8	
4	drilling motor plate	1000.4.1	1	
5	spring washer D 10	250.16.05	4	
6	feather 10x8x100	250.1.19	1	
7	screw M 10x35 / 12.9	1000.4.3	4	



Item	Designation	Order no.	Piece	Price/Piece
	<b>Drilling motor plate for Cardi Engines</b>	<b>1000.4.0 K C</b>	<b>1</b>	
1	screw M 8x40 / 12.9	1000.4.4	10	
2	straining beam	1000.4.2	1	
3	spring washer D 8	250.1.29	10	
4	drilling motor plate	1000.4.1	1	
5	spring washer D 10	250.16.05	4	
6	feather 10x8x100	250.1.19	1	
7	screw M 10x35 / 12.9	1000.4.3	4	

## 13-15 Quick change distance piece 200 mm cpl. D1000



### 13 Quick change distance piece 200 D 1000

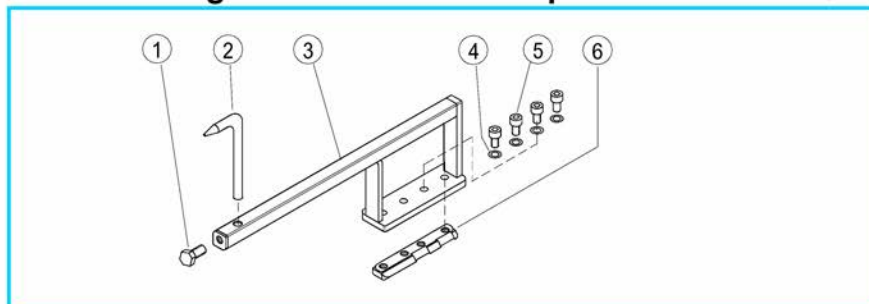
Item	Designation	Order no.	Piece	Price/Piece
	Ground drilling motor plate cpl.	1000.11.0 K	1	
1	screw M 8x45 / 12.9	1000.11.3	8	
2	spring washer D 8	250.1.29	8	
3	adjusting ring M 12 clamped	1000.1.12	2	
4	washer D 12	1000.1.13	4	
5	ground drilling motor plate	1000.11.1	1	
6	clamping screw M 12x160	1000.1.11	2	
7	stretching block	1000.1.10	2	
8	feather 10x8x100 mm	250.1.19	1	
9	Spacer 200 - D 1000 mm	1000.10.1	1	
	Drilling motor plate cpl.	1000.4.0 BD K	1	
10	feather 10x8x100 mm	250.1.19	1	
11	screw M 10x35 / 12.9	1000.4.3	4	
12	spring washer D 10	250.16.05	4	
13	drilling motor plate	1000.4.1	1	
14	straining beam	1000.4.2	1	
15	spring washer D 8	250.1.29	8	
16	screw M 8x40 / 12.9	1000.4.4	8	

### 14 Quick change distance piece 300 D 1200

Item	Designation	Order no.	Piece	Price/Piece
	Ground drilling motor plate cpl.	1000.11.0 K	1	
1	screw M 8x45 / 12.9	1000.11.3	8	
2	spring washer D 8	250.1.29	8	
3	adjusting ring M 12 clamped	1000.1.12	2	
4	washer D 12	1000.1.13	4	
5	ground drilling motor plate	1000.11.1	1	
6	clamping screw M 12x160	1000.1.11	2	
7	stretching block	1000.1.10	2	
8	feather 10x8x100 mm	250.1.19	1	
9	Spacer 300 - D 1200 mm	1000.10.2	1	
	Drilling motor plate cpl.	1000.4.0 BD K	1	
10	feather 10x8x100 mm	250.1.19	1	
11	screw M 10x35 / 12.9	1000.4.3	4	
12	spring washer D 10	250.16.05	4	
13	drilling motor plate	1000.4.1	1	
14	straining beam	1000.4.2	1	
15	spring washer D 8	250.1.29	8	
16	screw M 8x40 / 12.9	1000.4.4	8	

**Quick change distance piece 400 D 1400****15**

Item	Designation	Order no.	Piece	Price/Piece
	<b>Ground drilling motor plate cpl.</b>	<b>1000.11.0 K</b>	<b>1</b>	
1	screw M 8x45 / 12.9	1000.11.3	8	
2	spring washer D 8	250.1.29	8	
3	adjusting ring M 12 clamped	1000.1.12	2	
4	washer D 12	1000.1.13	4	
5	ground drilling motor plate	1000.11.1	1	
6	clamping screw M 12x160	1000.1.11	2	
7	stretching block	1000.1.10	2	
8	feather 10x8x100 mm	250.1.19	1	
9	Spacer 400 - D 1400 mm	1000.10.3	1	
	<b>Drilling motor plate cpl.</b>	<b>1000.4.0 BD K</b>	<b>1</b>	
10	feather 10x8x100 mm	250.1.19	1	
11	screw M 10x35 / 12.9	1000.4.3	4	
12	spring washer D 10	250.16.05	4	
13	drilling motor plate	1000.4.1	1	
14	straining beam	1000.4.2	1	
15	spring washer D 8	250.1.29	8	
16	screw M 8x40 / 12.9	1000.4.4	8	

**Drilling middles indicator cpl. KF 1000****16**

Item	Designation	Order no.	Piece	Price/Piece
1	screw M 10x20	250.10.4	1	
2	drilling middles indicator	250.10.5	1	
3	drilling middles indicator body	250.10.2	1	
4	spring washer D 8	250.1.29	4	
5	hexagonal screw M 8x18	150.1.21	4	
6	straining beam M 8x120	150.1.17	1	



The company FleiKa Maschinen- und Anlagenbau GmbH & Co KG is a privately owned medium-sized family business in the plant and machinery sector. From years of experience in the field of concrete processing with diamond tools and machines, Mr. Kastner developed a novel roller guiding system for core drilling stands, which was granted patent protection in 1997. In 1995, Mr. Kastner decided to dissolve his drilling and sawing business and to found the company FleiKa Maschinen und Anlagenbau GmbH & Co KG.

By tapping into over 20 years of practical experience as an independent concrete driller, drill stand designer and manufacturer, Mr. Kastner, in time-consuming development efforts, has invented and constructed the distinctive, labour-saving parts.

Through his own daily work on the stands, the head of the company guarantees a sophisticated and unique quality product. New ideas for improving the stands are immediately realized and incorporated into the equipment. The family ensures a high level of service and continuity.

---

The originals - drill stand, accessories and spare parts - are only available through our **distribution partners**



**Fleika Maschinen und Anlagenbau GmbH Co. KG**

Koblberg 1, D-83564 Soyen, Vertrieb: Alois Blüml, Tel: 0049-8071-103228 – Fax: 0049-8071-103256