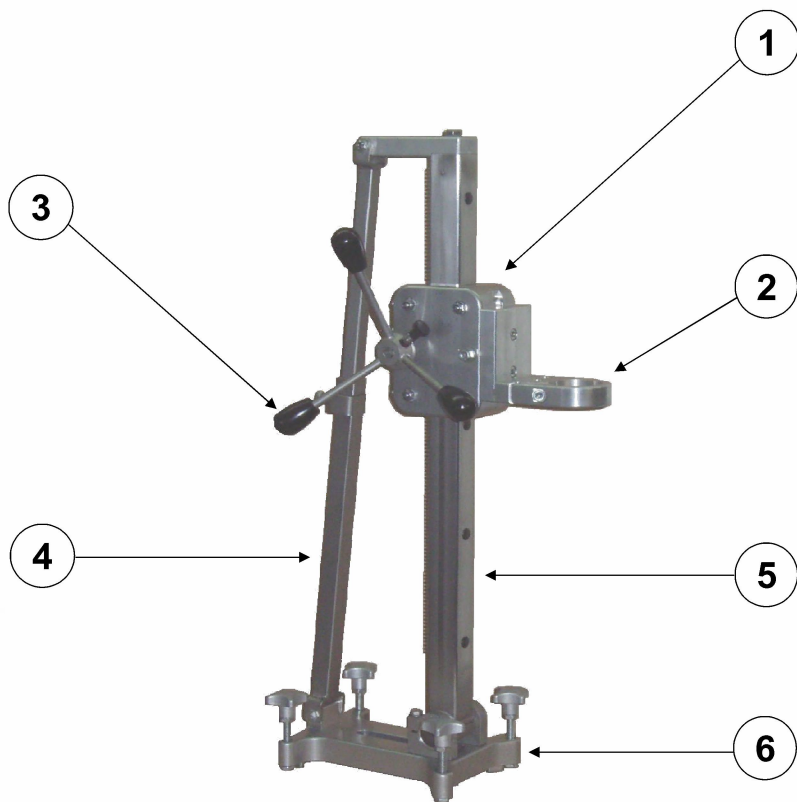


# parts list KF 160

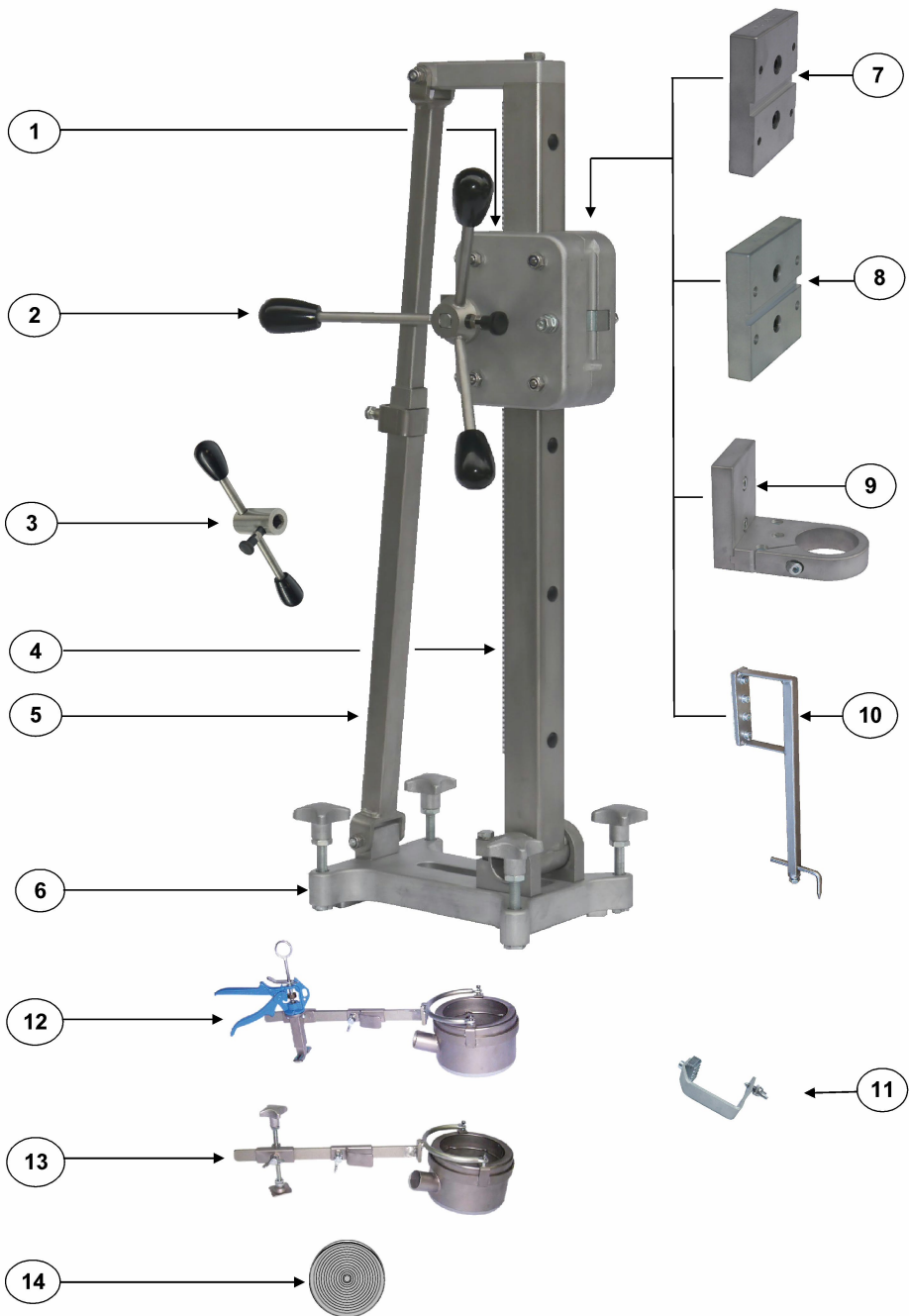


Item	Designation	Order no.	Piece	Price/Piece
	Drill KF 160	KF 160	1	
1	Carriage cpl.	160.1.00 K	1	
2	Instep neck adapter cpl.	160.9.00 K	1	
3	Crank cpl.	160.2.00 K	1	
4	Support cpl.	160.5.00 K	1	
5	Column cpl.	160.4.00 K	1	
6	Foot plate cpl.	160.6.00 K	1	

**Fleika Maschinen und Anlagenbau GmbH Co. KG**

Koblberg 1, 83564 Soyen, Tel. 0049-8071-95094, Fax 0049-8071-51375, E-Mail: info@fleika.de

# Drill Stands KF 160



## components and parts list KF 160

Item	Designation	Order no.	Piece	Price/Piece
1	Carriage cpl.	160.1.00 K	1	
2	Crank cpl.	160.2.00 K	1	
3	Single lever crank cpl.	160.3.00 K	1	
4	Column cpl.	160.4.00 K	1	
5	Support cpl.	160.5.00 K	1	
6	Foot plate steel cpl.	160.6.00 K	1	
7	Drilling motor plate 80 cpl.	160.7.00 K	1	
8	Drilling motor plate 100 cpl.	160.8.00 K	1	
9	Instep neck adapter cpl.	160.9.00 K	1	
10	Drilling middles indicator cpl.	160.10.00 K	1	
11	End stop cpl.	160.11.00 K	1	
12	Drill water suction ring + chuck handle 130	160.12.00 K	1	
13	Drill water suction ring + chuck screw 130	160.13.00 K	1	
14	Membrane	160.14.00 K	1	

*The **Original**  
proven thousands of times since 1995*

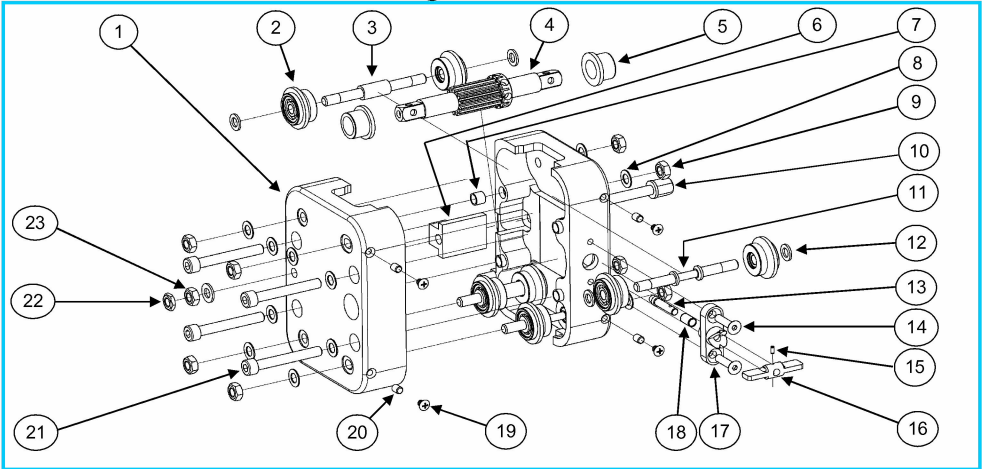
**valid from 01.02.2016**

**Distributors**

**Copyright © 2015 by FleiKa Maschinen- und Anlagenbau GmbH & Co KG**

**Information:** Changes to the drill stands we reserve the right.

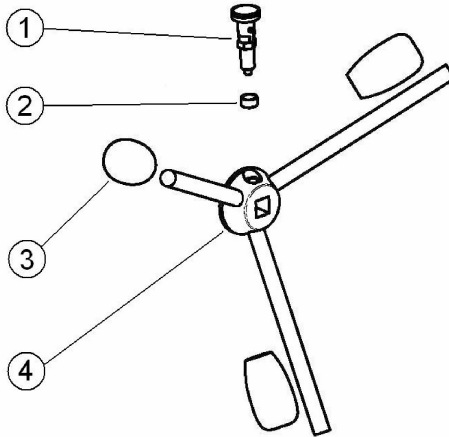
## Carriage KF 160



Item	Designation	Order no.	Piece	Price/Piece
	<b>Carriage cpl.</b>	<b>160.1.00 K</b>	<b>1</b>	
1	housing left or right	160.1.01	2	
2	rollers cpl.	160.1.02	8	
3	axis	160.1.03	2	
4	twin spine shift	160.1.04	1	
5	bearing bush	250.1.23	2	
6	stretching block	160.1.05	1	
7	bushing	160.1.06	4	
8	spring washer D 8	250.1.29	8	
9	nut self locking M 8	250.3.14	8	
10	adjusting screw	160.1.07	1	
11	twin spine shift	160.1.08	2	
12	spring washer D 8x1,4	160.1.09	10	
13	feed locking bolt	160.1.10	1	
14	countersunk screw 6x15	160.1.11	2	
15	clamping pin 2,5x10	160.1.12	1	
16	feed locking interlock	160.1.13	1	
17	feed locking carriage	160.1.14	1	
18	spring	160.1.15	1	
19	covering screw M 6x8	250.1.12	4	
20	grub screw M 6x8	160.1.16	4	
21	hexagon screw M 8x50	150.11.4	4	
22	hex nut M 8 low VA	160.1.17	1	
23	hex nut M 8 VA	160.1.18	1	

## Crank cpl. KF 160

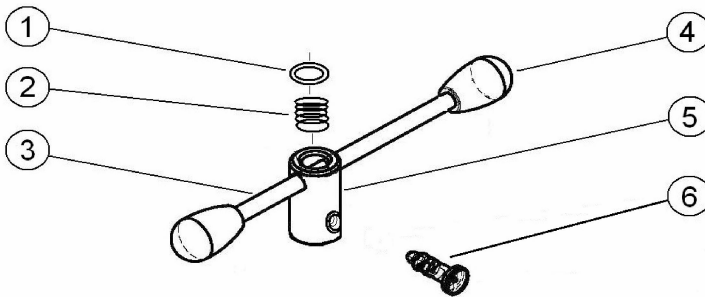
2



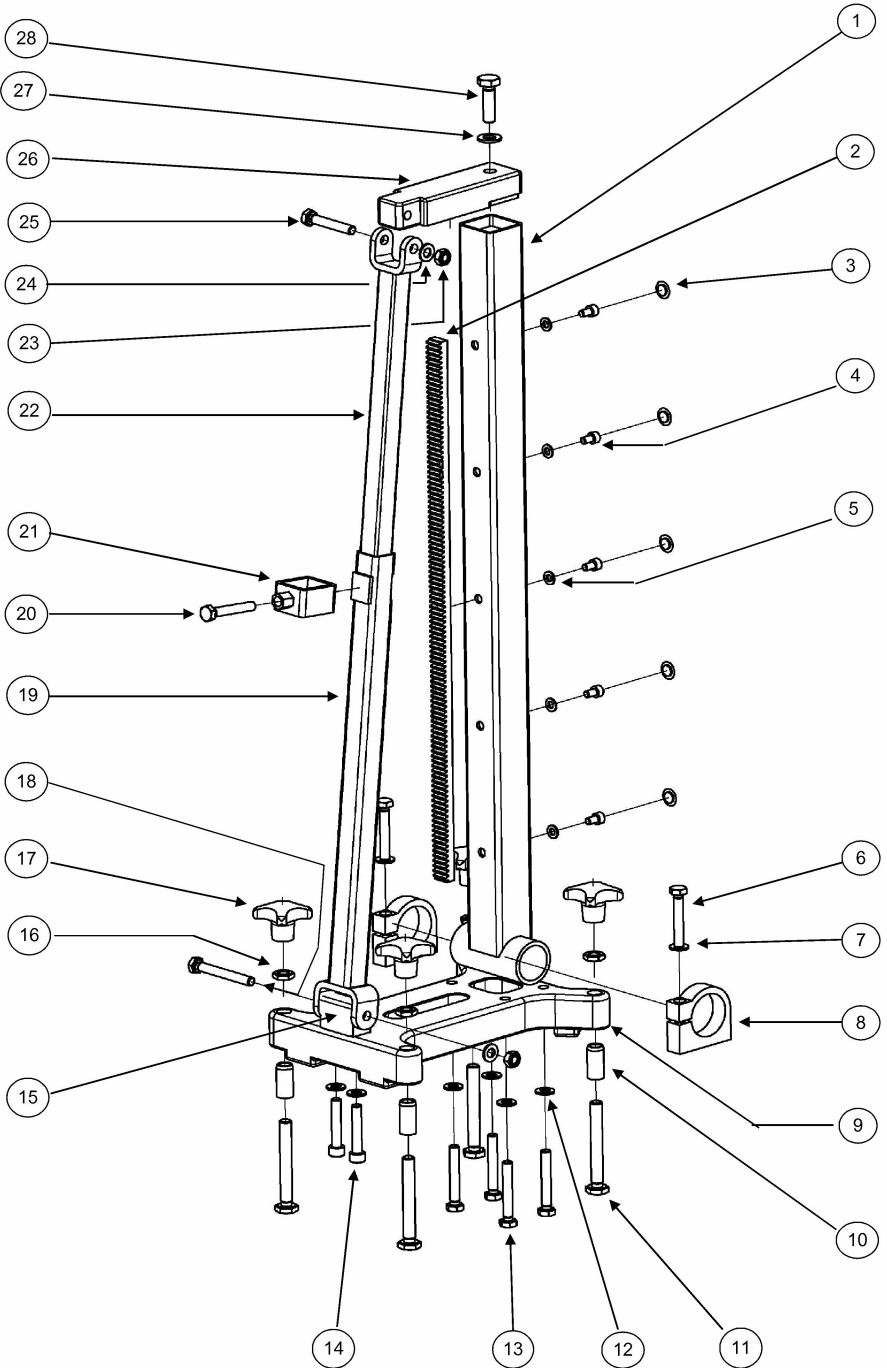
Item	Designation	Order no.	Piece	Price/Piece
1	stop bolt	250.2.2	1	
2	spacer ring	250.2.4	1	
3	ball handle	160.2.1	3	
4	crank body	160.2.2	1	

## Single lever crank cpl. KF 160

3

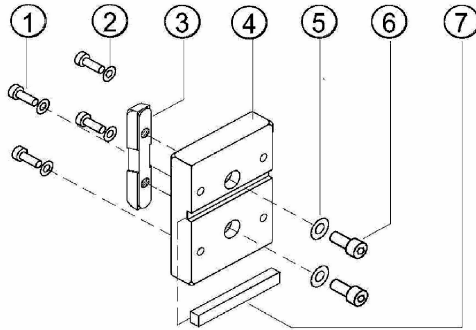


Item	Designation	Order no.	Piece	Price/Piece
1	spring D 10	600.3.3	2	
2	feather	600.3.4	1	
3	roundmaterial D 10x220	160.3.4	1	
4	ball handle	160.3.1	2	
5	hub	160.3.2	1	
6	stop bolt	250.2.2	1	



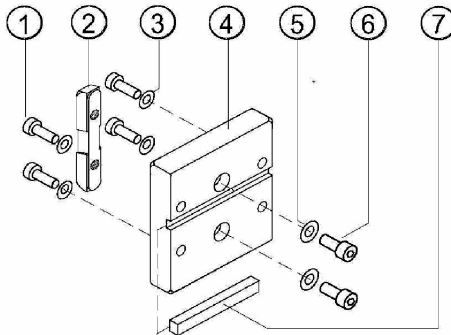
1	guide bar 40x40x700 mm	160.4.01	1	
2	gear rack Mo. 1,5x600 mm	160.4.02	1	
3	blind plugs D11	150.6.5	5	
4	hexagonal screw M6x10	160.4.03	5	
5	washer D6	150.6.4	5	
6	clamping bolt M8x35 10.9	160.4.04	4	
7	washer D8	160.1.09	2	
8	flexible bracket D40	160.4.06	2	
9	foot plate body alu	160.6.01	1	
10	threaded bushings	160.6.02	4	
11	adjusting screw	160.6.03	4	
12	spring washer D8	250.1.29	6	
13	screw M8x40 10.9 vz	250.1.34	4	
14	hexagonal screw M8x35 8.8	250.1.33	2	
15	support block	160.6.04	1	
16	nut flat M10	250.3.6	4	
17	star knob Alu M10	150.3.5	4	
18	screw M 8x60	150.6.11	1	
19	support sleeve 25x25x400 mm	160.5.01	1	
20	screw M 8x25 10.9	160.5.02	1	
21	clamp 26x30 mm	160.5.03	1	
22	support tube 20x20x440 mm	160.5.04	1	
23	hexagon nut M8 self-locking	250.3.14	2	
24	spring washer D8	250.1.29	2	
25	screw M8x45	160.5.05	1	
26	grip	160.5.06	1	
27	spring washer D10	250.16.05	1	
28	screw M10x65	250.5.3	1	

## 7 Drilling motor plate 80 mm cpl. KF 160



Item	Designation	Order no.	Piece	Price/Piece
1	hexagonal screw M 6x25 12.9	160.7.01	4	
2	spring washer D 6	160.7.02	4	
3	straining beam KF 160	160.7.03	1	
4	Drilling motor plate 80x110mm	160.7.04	1	
5	spring washer D 8	250.1.29	2	
6	hexagonal screw M 8x16 12.9	160.7.05	2	
7	Feather 10x8x80mm	160.7.06	1	

## 8 Drilling motor plate 100 mm cpl. KF 160

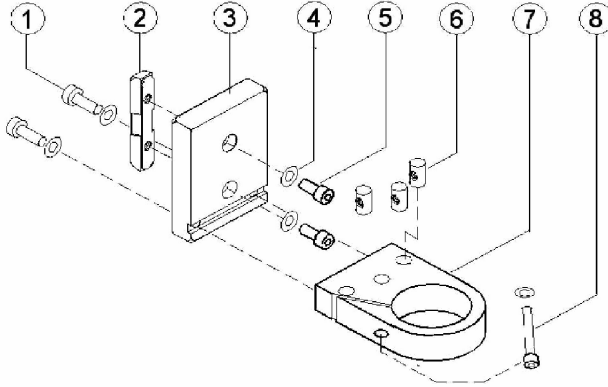


Item	Designation	Order no.	Piece	Price/Piece
1	hexagonal screw M 8x25 12.9	160.7.01	4	
2	straining beam KF 160	160.7.03	1	
3	spring washer D 6	160.7.02	4	
4	Drilling motor plate 100x110mm	160.8.01	1	
5	spring washer D 8	250.1.29	2	
6	hexagonal screw M 8x16 12.9	160.7.05	4	
7	Feather 10x8x100 mm	250.1.19	1	



## Instep neck adapter cpl. KF 160

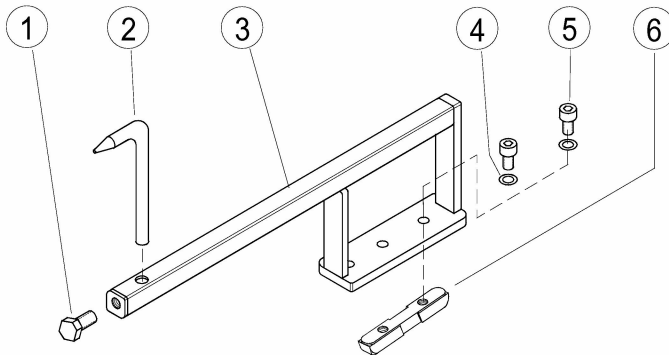
9



Item	Designation	Order no.	Piece	Price/Piece
1	hexagonal screw M 8x45 mm	150.11.3	2	
2	straining beam KF 160	160.7.03	1	
3	instep neck adapter body	160.9.01	1	
4	spring washer D 8	250.1.29	5	
5	hexagonal screw M 8x16 12.9	160.7.05	2	
6	cross threaded bolts	150.11.5	3	
7	instep neck adapter plate	160.9.02	1	
8	hexagonal screw M 8x50	150.11.4	1	

## Drilling middles indicator cpl. KF 160

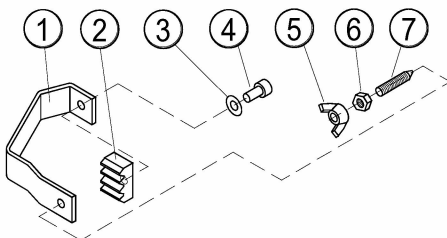
10



Item	Designation	Order no.	Piece	Price/Piece
1	screw M 10x20	250.10.4	1	
2	drilling middles indicator	250.10.5	1	
3	drilling middles indicator body	250.10.2	1	
4	spring washer D 8	250.1.29	2	
5	hexagonal screw M 8x14	160.10.1	2	
6	straining beam KF 160	160.7.03	1	

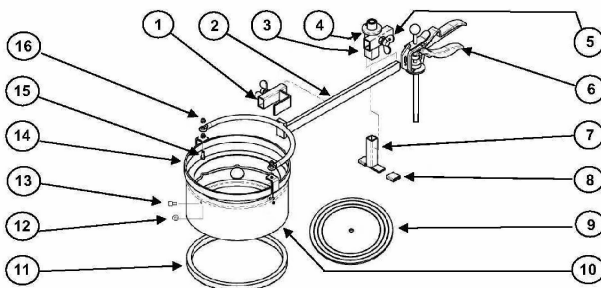
11

## End stop cpl. KF 160



Item	Designation	Order no.	Piece	Price/Piece
1	end stop body 40mm	160.11.01	1	
2	gear rack Mo 1,5	150.6.32	1	
3	washer D 6	150.6.4	1	
4	hexagonal screw M 6x12	150.6.3	1	
5	thumb screw M 8	150.6.33	1	
6	hexagonnut flat M 8	150.6.34	1	
7	hexagonthreaded screw M 8x25	150.6.35	1	

## 12 Drill water suction ring cpl. KF160+chuck handle

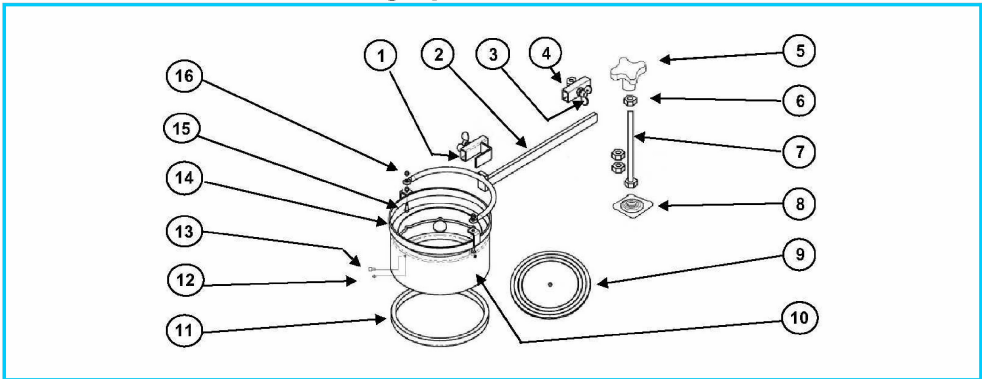


## Drill water suction ring cpl. KF160+chuck handle

Item	Designation	Order no.	Piece	Price/Piece
1	thrust fork	160.12.01	1	
2	chuck fork D 132	150.8.3	1	
3	bracing device	250.9.2	1	
4	hexagonal screw M 6x12	150.6.3	2	
5	thumb screw M 10x20	250.9.9	2	
6	chuck handle	250.9.1	1	
7	pressure piece	250.9.8	1	
8	rubber sleeves for pressure piece	250.9.13	2	
10	collecting ring D 132	150.8.4	1	
11	sealing rubber D 132	150.8.6	1	
12	screw M 4	250.9.12	3	
13	cylinder screw M 4x6	250.9.11	3	
14	retaining ring D 132	150.8.5	1	
15	screw M 6x25	250.9.10	2	
16	nut flat M 6 self-locking	250.3.7	2	

# Drill water suction ring cpl. KF160 + chuck screw

13



## Drill water suction ring cpl. KF160 + chuck screw

Item	Designation	Order no.	Piece	Price/Piece
1	thrust fork	160.12.01	1	
2	chuck fork D 132	150.8.3	1	
3	thumb screw M 10x20	250.9.9	2	
4	chuck screw	250.9.15	1	
5	alu cross handle M 12	250.4.3	1	
6	hexagon screw nut M 12x7	250.1.3	3	
7	screw M 12x160	250.9.16	1	
8	supporting plate D 12	250.9.17	1	
10	collecting ring D 132	150.8.4	1	
11	sealing rubber D 132	150.8.6	1	
12	nut M 4	250.9.12	3	
13	cylinder screw M 4x6	250.9.11	3	
14	retaining ring D 132	150.8.5	1	
15	screw M 6x25	250.9.10	2	
16	nut flat M 6 self-locking	250.3.7	2	

14

9	Membrane D 132	150.8.7	1	
---	----------------	---------	---	--



The company FleiKa Maschinen- und Anlagenbau GmbH & Co KG is a privately owned medium-sized family business in the plant and machinery sector. From years of experience in the field of concrete processing with diamond tools and machines, Mr. Kastner developed a novel roller guiding system for core drilling stands, which was granted patent protection in 1997. In 1995, Mr. Kastner decided to dissolve his drilling and sawing business and to found the company FleiKa Maschinen und Anlagenbau GmbH & Co KG.

By tapping into over 20 years of practical experience as an independent concrete driller, drill stand designer and manufacturer, Mr. Kastner, in time-consuming development efforts, has invented and constructed the distinctive, labour-saving parts.

Through his own daily work on the stands, the head of the company guarantees a sophisticated and unique quality product. New ideas for improving the stands are immediately realized and incorporated into the equipment. The family ensures a high level of service and continuity.

---

The originals - drill stand, accessories and spare parts - are only available through our **distribution partners**



**Fleika Maschinen und Anlagenbau GmbH Co. KG**

Koblberg 1, 83564 Soyen, Tel. 0049-8071-95094, Fax 0049-8071-51375, E-Mail: [info@fleika.de](mailto:info@fleika.de)