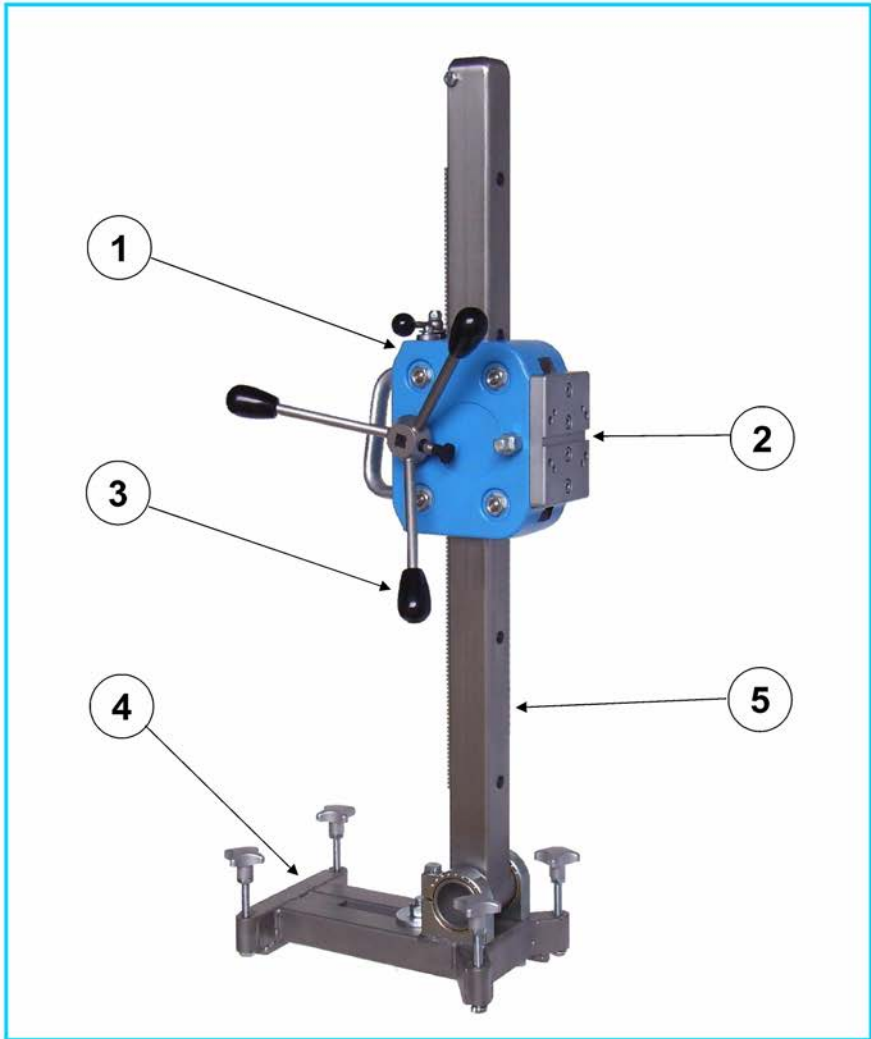
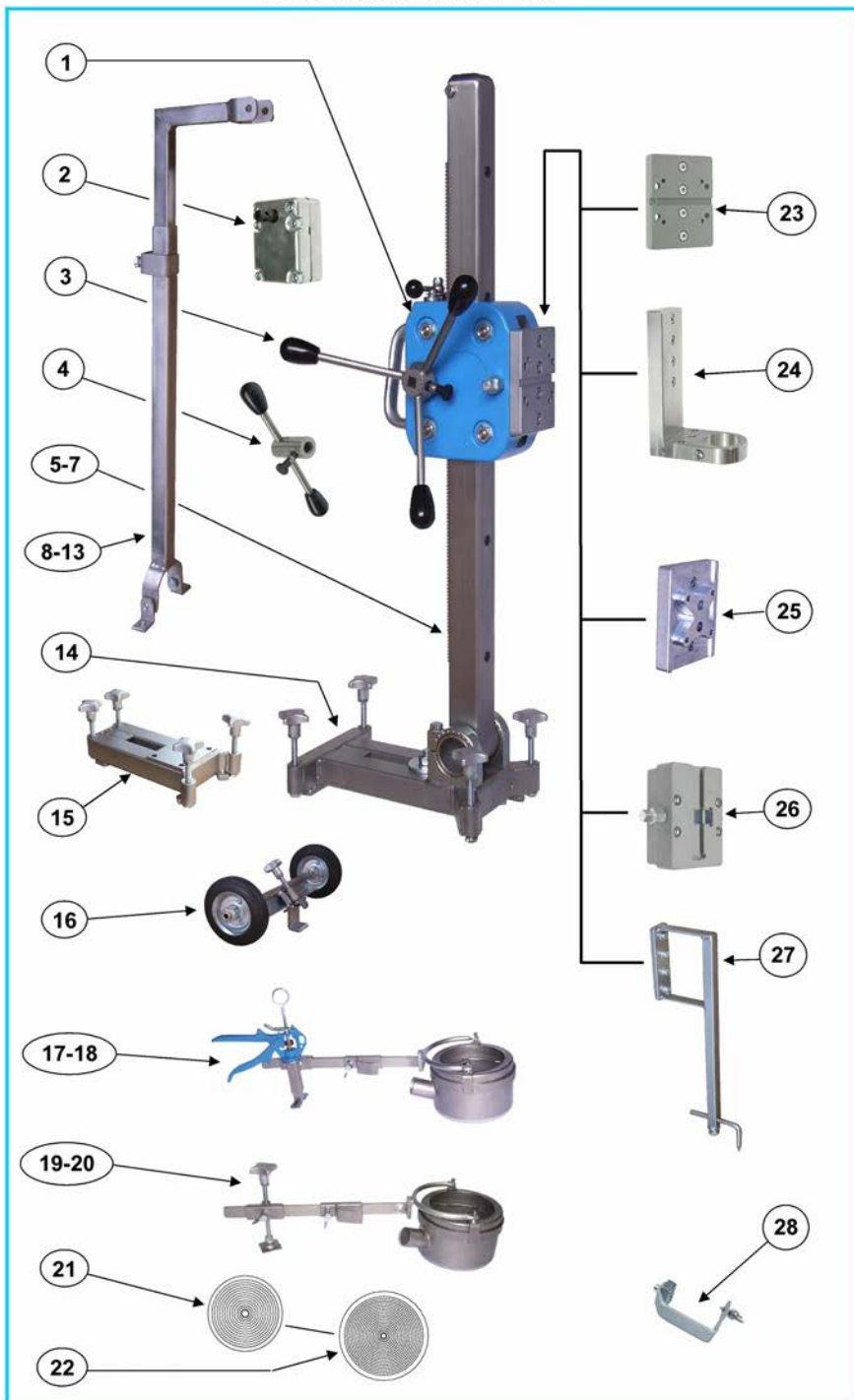


# Drill Stands KF 250



Item	Designation	Order no.	Piece	Price/Piece
	Drill KF 250 with colour cpl.	KF 250.F	1	
1	Carriage with colour cpl.	150.1.0 KF K F	1	
2	Drilling motor plate cpl.	150.1.18 K	1	
3	Crank cpl.	150.2.0 K	1	
4	Foot plate steel cpl.	150.4.0 ST K	1	
5	Column LG 820 with flexible bracket cpl.	150.6.0 KF G.K	1	

# Drill stands KF 250



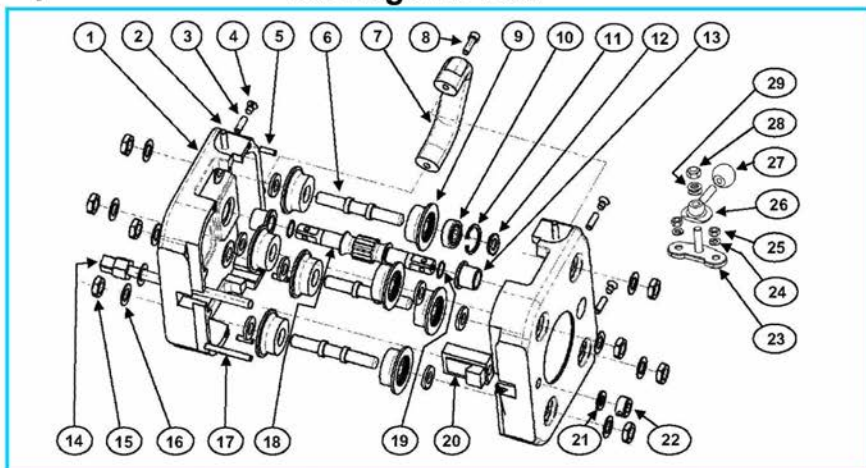
## components and parts list KF 250

Item	Designation	Order no.	Piece	Price/Piece
1	Carriage with colour cpl.	150.1.0 KF K F	1	
2	Step up gear 1:2,6 cpl.	150.12.00 K	1	
3	Crank cpl.	150.2.0 K	1	
4	Single lever crank cpl.	150.2.50 K	1	
5	Column LG 820 with flexible bracket cpl.	150.6.0 KF G.K	1	
6	Column LG 1300 with flexible bracket cpl.	150.6.13 KF G.K	1	
7	Column LG 1960 with flexible bracket cpl.	150.6.20 KF G.K	1	
8	Support 820 mm cpl.	250.18.00 K	1	
9	Support 1300 mm cpl.	250.19.00 K	1	
10	Support 1960 mm cpl.	250.20.00 K	1	
11	Support 820 mm for retrofiting	250.21.00 K	1	
12	Support 1300 mm for retrofiting	250.22.00 K	1	
13	Support 1960 mm for retrofiting	250.23.00 K	1	
14	Foot plate steel cpl.	150.4.0 ST K	1	
15	Foot plate steel cpl. small	150.4.0 ST.Sch K	1	
16	Wheel Kit cpl.	250.4.6 K	1	
17	Drill water suction ring + chuck handle D132 cpl.	250.8.0 K	1	
18	Drill water suction ring + chuck handle D202 cpl.	250.9.0 K	1	
19	Drill water suction ring + chuck screw D132 cp	250.8.01 K	1	
20	Drill water suction ring + chuck screw D202 cp	250.9.01 K	1	
21	Membrane D 132	150.8.7	1	
22	Membrane D 202	250.8.7	1	
23	Drilling motor plate cpl.	150.1.18 K	1	
24	Instep neck adapter cpl.	150.11.0 K	1	
25	Motor plate for Hilti-Engines cpl.	250.1.18 H K	1	
26	Quick change distance piece 50 mm cpl.	150.1.19 BG K	1	
27	Drilling middles indicator, m.d. 115-150 mm cpl.	250.10.2 K	1	
28	End stop cpl.	150.6.30 K	1	

Copyright © 2015 by FleiKa Maschinen- und Anlagenbau GmbH & Co KG

Information: We reserve to make changes of our Drill stands.

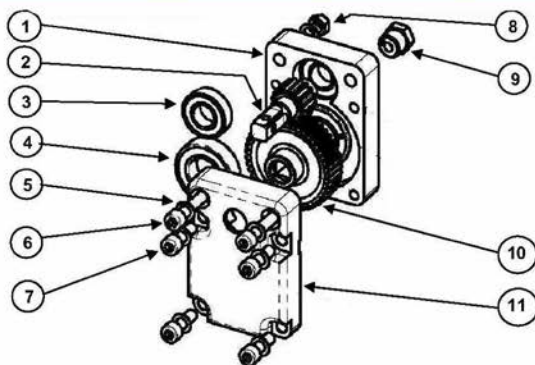
## Carriage KF 250



Item	Designation	Order no.	Piece	Price/Piece
	<b>Carriage cpl. with colour</b>	<b>150.1.0 KF K F</b>	<b>1</b>	
1	housing left or right with colour	150.1.1 KF F	2	
2	covering screw M6x20	150.1.27	2	
3	grub screw I6kt. M 6x20	250.1.11	4	
4	covering screw M 6x8	250.1.12	4	
5	clamping pin 5x16	250.1.25	4	
6	axis	150.1.2	4	
7	Griff	250.1.13	1	
8	I6kt.Schraube M 6x20	150.1.14	2	
	<b>Rollers with ball bearing cpl.</b>	<b>150.1.5 K</b>	<b>8</b>	
9	rollers	150.1.5	8	
10	ball bearing D 32x12	250.1.6	8	
11	snap ring D 32	250.1.5.1	8	
12	washer for ball bearing	250.1.4.1	8	
13	bearing bush D16xD22x20 mm	150.1.10	2	
14	adjusting screw	150.1.15	1	
15	nut M 12x7 flat	250.1.3	8	
16	spring washer D 12	250.1.4	8	
17	clamping pin 6x45	150.1.24	1	
18	spline shaft	150.1.7	1	
19	spacer washer D 16x2 mm	250.1.8	2	
20	stretching block	150.1.16	1	
21	washer D 10	150.5.6	2	
22	adjusting ring M 10	150.1.28	1	
	<b>Feed locking cpl.</b>	<b>250.3.10 K</b>	<b>1</b>	
23	feed locking	250.3.11	1	
24	washer D 6	250.3.8	2	
25	nut self locking M 6	250.3.7	2	
26	turn plate	250.3.12	1	
27	ball handle	250.3.13	1	
28	nut self locking M 8	250.3.14	1	
29	spring washer D 8	250.1.29	2	

## Step up gear 1:2,6 cpl. KF 250

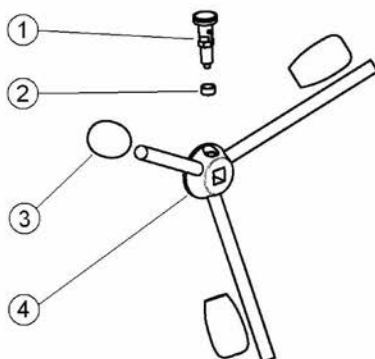
2



Item	Designation	Order no.	Piece	Price/Piece
1	housing B	150.12.02	1	
2	tooth wave	150.12.03	1	
3	ball bearing 17x35	150.12.06	2	
4	ball bearing 25x47	150.12.05	2	
5	washer D 8	250.1.29	8	
6	hexagonal screw M 8x25	150.1.30	4	
7	hexagonal screw M 8x35	250.1.33	2	
8	nut M 8	150.3.14	1	
9	nut M 12x8	150.12.11	1	
10	gearwheel	150.12.04	1	
11	housing A	150.12.01	1	

## Crank cpl. KF 250

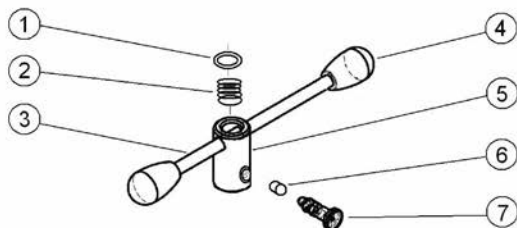
3



Item	Designation	Order no.	Piece	Price/Piece
1	stop bolt	250.2.2	1	
2	spacer ring	250.2.4	1	
3	ball handle	250.2.3	3	
4	crank body	150.2.1	1	

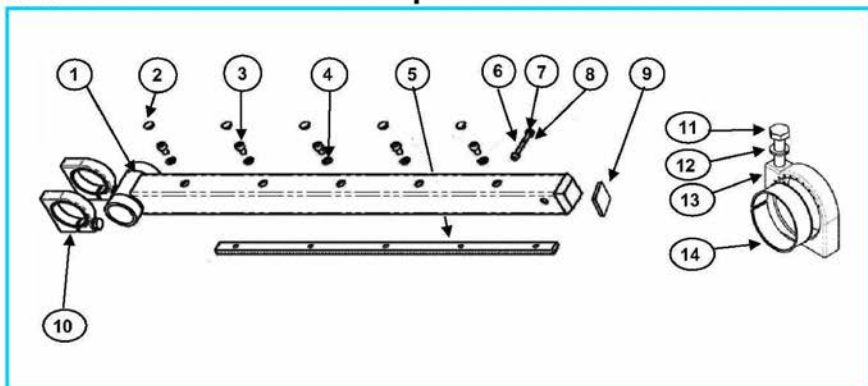


#### 4 Single lever crank cpl. KF 250



Item	Designation	Order no.	Piece	Price/Piece
1	spring	600.3.3	2	
2	feather	600.3.4	1	
3	roundmaterial D 12x250 mm	150.2.51	1	
4	ball handle	250.2.3	2	
5	hub	600.3.1	1	
6	distance ring	600.3.5	1	
7	stop bolt	250.2.2	1	

#### 5-7 Column cpl. KF 250



#### 5 Column LG 820 cpl. with flexible bracket

Item	Designation	Order no.	Piece	Price/Piece
1	guide bar 50x50x820mm	150.6.1 KF	1	
2	blindystopsel D 11	150.6.5	5	
3	hexagonal screw M 6x12	150.6.3	5	
4	washer D 6	150.6.4	5	
5	gear rack Mo.1,5x711 mm	150.6.2	1	
6	screw stop M 8x60	150.6.11	1	
7	nut flat M 8	250.3.14	1	
8	washer D 8	250.6.4	1	
9	cover cup	150.6.17	1	
10	Flexible bracket cpl.	150.5.0 K	2	
11	clamping bolt M 10x45	150.5.4	2	
12	washer D 10	150.5.6	2	
13	Flexible bracket	150.5.1	2	
14	brass ring	150.5.2	2	

**Column LG 1300 cpl. with flexible bracket****6**

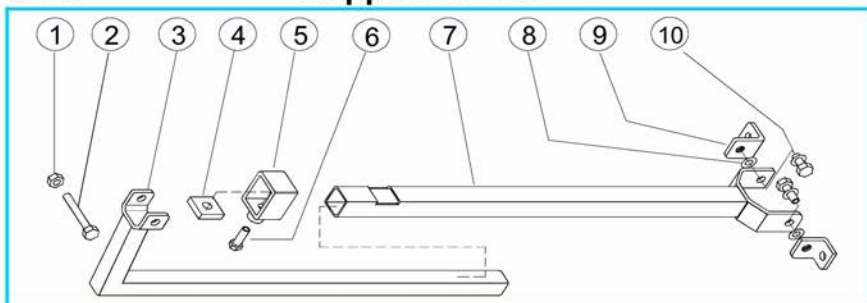
Item	Designation	Order no.	Piece	Price/Piece
1	guide bar 50x50x1300mm	150.6.013 KF	1	
2	blindlystopse D 11	150.6.5	9	
3	hexagonal screw M 6x12	150.6.3	9	
4	washer D 6	150.6.4	9	
5	gear rack Mo.1,5x520 mm	150.6.214	1	
5	gear rack Mo.1,5x650mm	150.6.2 A	1	
6	screw stop M 8x60	150.6.11	1	
7	nut flat M 8	250.3.14	1	
8	washer D 8	250.6.4	2	
9	cover cup	150.6.17	1	
10	Flexible bracket cpl.	150.5.0 K	2	
11	clamping bolt M 10x45	150.5.4	2	
12	washer D 10	150.5.6	2	
13	Flexible bracket	150.5.1	2	
14	brass ring	150.5.2	2	

**Column LG 1960 cpl. with flexible bracket****7**

Item	Designation	Order no.	Piece	Price/Piece
1	guide bar 50x50x1960mm	150.6.021 KF	1	
2	blindlystopse D 11	150.6.5	14	
3	hexagonal screw M 6x12	150.6.3	14	
4	washer D 6	150.6.4	14	
5	gear rack Mo.1,5x500 mm	150.6.22	1	
5	gear rack Mo.1,5x650mm	150.6.2 A	2	
6	screw stop M 8x60	150.6.11	1	
7	nut flat M 8	250.3.14	1	
8	washer D 8	250.6.4	2	
9	cover cup	150.6.17	1	
10	Flexible bracket cpl.	150.5.0 K	2	
11	clamping bolt M 10x45	150.5.4	2	
12	washer D 10	150.5.6	2	
13	Flexible bracket	150.5.1	2	
14	brass ring	150.5.2	2	

8-10

## Support KF 250



8

## Support 820 mm

Item	Designation	Order no.	Piece	Price/Piece
1	nut M 8	250.3.14	1	
2	hexagon screw M 8x70	250.18.04	1	
3	supporting tube 25x25x555 mm	250.18.01	1	
4	thrust collar 30x30xD10	250.18.06	1	
5	clamp 31x42 mm	250.18.03	1	
6	hexagon screw M 10x25	250.18.05	1	
7	supporting sleeve 30x30x530 mm	250.18.02	1	
8	spring washer D 10	250.16.05	6	
9	mounting bracke M 10 40x35	250.18.08	2	
10	hexagon screw M 10x16	250.18.07	4	

9

## Support 1300 mm

Item	Designation	Order no.	Piece	Price/Piece
1	nut M 8	250.3.14	1	
2	hexagon screw M 8x70	250.18.04	1	
3	supporting tube 25x25x1030 mm	250.19.01	1	
4	thrust collar 30x30xD10	250.18.06	1	
5	clamp 31x42 mm	250.18.03	1	
6	hexagon screw M 10x25	250.18.05	1	
7	supporting sleeve 30x30x530 mm	250.18.02	1	
8	spring washer D 10	250.16.05	6	
9	mounting bracke M 10 40x35	250.18.08	2	
10	hexagon screw M 10x16	250.18.07	4	

10

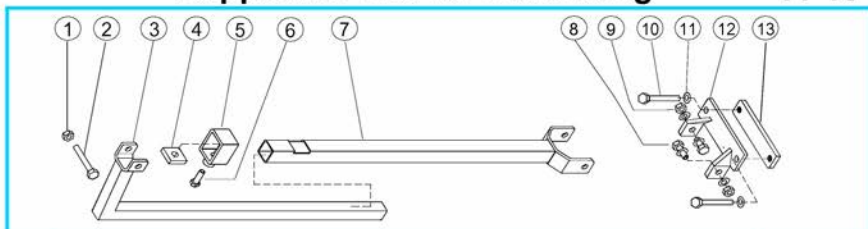
## Support 1960 mm

Item	Designation	Order no.	Piece	Price/Piece
1	nut M 8	250.3.14	1	
2	hexagon screw M 8x70	250.18.04	1	
3	supporting tube 25x25x1200 mm	250.20.01	1	
4	thrust collar 30x30xD10	250.18.06	1	
5	clamp 31x42 mm	250.18.03	1	
6	hexagon screw M 10x25	250.18.05	1	
7	supporting sleeve 30x30x530 mm	250.20.02	1	
8	spring washer D 10	250.16.05	6	
9	mounting bracke M 10 40x35	250.18.08	2	
10	hexagon screw M 10x16	250.18.07	4	



## Support KF 250 for retrofitting

11-13



## Support 820 mm for retrofitting

11

Item	Designation	Order no.	Piece	Price/Piece
1	nut M 8	250.3.14	1	
2	hexagon screw M 8x70	250.18.04	1	
3	supporting tube 25x25x555 mm	250.18.01	1	
4	thrust collar 30x30xD10	250.18.06	1	
5	clamp 31x42 mm	250.18.03	1	
6	hexagon screw M 10x25	250.18.05	1	
7	supporting sleeve 30x30x530 mm	250.18.02	1	
8	hexagon screw M 10x30	250.16.15	2	
9	nut M 10	250.6.12	2	
10	hexagon screw M 10x55	150.15.17	2	
11	spring washer D 10	250.16.05	6	
12	foot clamping part 132x40x82 mm	150.16.16	1	
13	foot clamping part 132x40 mm	150.16.18	1	

## Support 1300 mm for retrofitting

12

Item	Designation	Order no.	Piece	Price/Piece
1	nut M 8	250.3.14	1	
2	hexagon screw M 8x70	250.18.04	1	
3	supporting tube 25x25x1030 mm	250.19.01	1	
4	thrust collar 30x30xD10	250.18.06	1	
5	clamp 31x42 mm	250.18.03	1	
6	hexagon screw M 10x25	250.18.05	1	
7	supporting sleeve 30x30x530 mm	250.18.02	1	
8	hexagon screw M 10x30	250.16.15	2	
9	nut M 10	250.6.12	2	
10	hexagon screw M 10x55	150.15.17	2	
11	spring washer D 10	250.16.05	6	
12	foot clamping part 132x40x82 mm	150.16.16	1	
13	foot clamping part 132x40 mm	150.16.18	1	

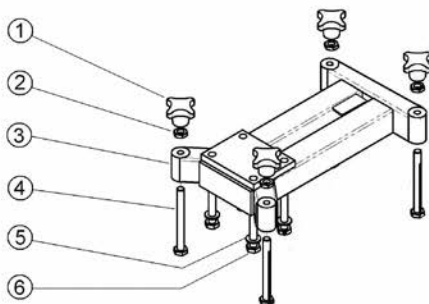
## Support 1960 mm for retrofitting

13

Item	Designation	Order no.	Piece	Price/Piece
1	nut M 8	250.3.14	1	
2	hexagon screw M 8x70	250.18.04	1	
3	supporting tube 25x25x1200 mm	250.20.01	1	
4	thrust collar 30x30xD10	250.18.06	1	
5	clamp 31x42 mm	250.18.03	1	
6	hexagon screw M 10x25	250.18.05	1	
7	supporting sleeve 30x30x530 mm	250.20.02	1	
8	hexagon screw M 10x30	250.16.15	2	
9	nut M 10	250.6.12	2	
10	hexagon screw M 10x55	150.15.17	2	
11	spring washer D 10	250.16.05	6	
12	foot clamping part 132x40x82 mm	150.16.16	1	
13	foot clamping part 132x40 mm	150.16.18	1	

14-15

## Foot plate KF 250



14

## Foot plate steel

Item	Designation	Order no.	Piece	Price/Piece
1	star knob M 10	150.3.5	4	
2	nut flat M 10	250.3.6	4	
3	Foot plate body	150.4.1 ST	1	
4	adjusting screw	150.4.2	4	
5	retainer ring D 10	150.5.5	4	
6	screw M 10x60	150.5.7	4	

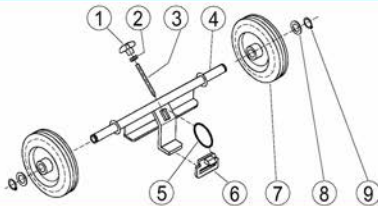
15

## Foot plate steel small

Item	Designation	Order no.	Piece	Price/Piece
1	star knob M 10	150.3.5	4	
2	nut flat M 10	250.3.6	4	
3	Foot plate body	150.4.1 ST Sch	1	
4	adjusting screw	150.4.2	4	
5	retainer ring D 10	150.5.5	4	
6	screw M 10x60	150.5.7	4	

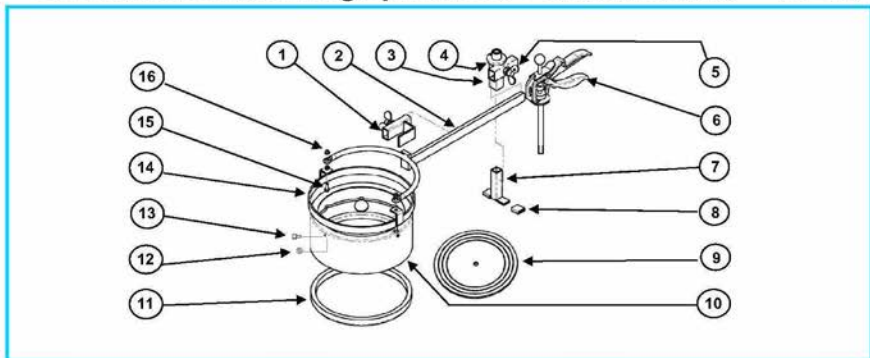
16

## Wheel kit KF 250-400



Item	Designation	Order no.	Piece	Price/Piece
1	star knob M 10	150.3.5	1	
2	nut flat M 10	250.3.6	1	
3	threaded bolts M 10	250.4.11	1	
4	wheel kit body	250.4.7	1	
5	clamping rubber	250.4.13	1	
6	span clumb	250.4.12	1	
7	wheels D 160	250.4.8	2	
8	washer D 20	250.4.9	2	
9	snaps rings D 20	250.4.10	2	

## Drill water suction ring cpl. KF250 + chuck handle 17-18



### Drill water suction ring D 132 + chuck handle

17

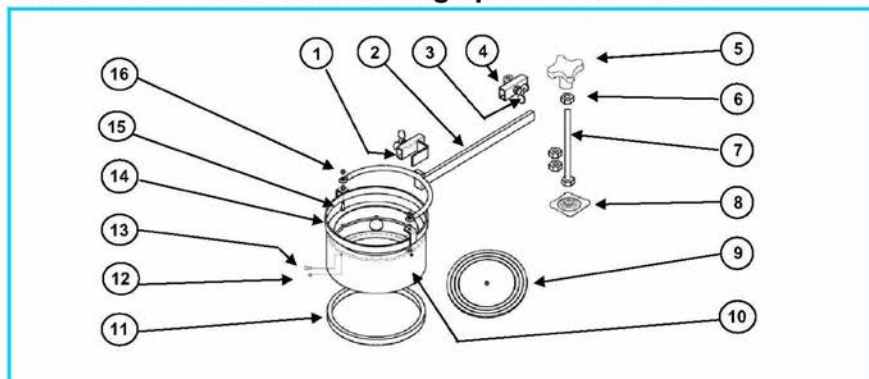
Item	Designation	Order no.	Piece	Price/Piece
1	thrust fork	250.9.7	1	
2	chuck fork D 132	150.8.3	1	
3	bracing device	250.9.2	1	
4	screw M 6x12	150.6.3	2	
5	thumb screw M 10x20	250.9.9	2	
6	chuck handle	250.9.1	1	
7	pressure piece	250.9.8	1	
8	rubber sleeves for pressure piece	250.9.13	2	
10	collecting ring D 132	150.8.4	1	
11	sealing rubber D 132	150.8.6	1	
12	nut M 4	250.9.12	3	
13	cylinder screw M 4x6	250.9.11	3	
14	retaining ring D 132	150.8.5	1	
15	screw M 6x25	250.9.10	2	
16	nut flat M 6	250.3.7	2	

### Drill water suction ring D 202 + chuck handle

18

Item	Designation	Order no.	Piece	Price/Piece
1	thrust fork	250.9.7	1	
2	chuck fork D 202	250.9.3	1	
3	bracing device	250.9.2	1	
4	screw M 6x12	150.6.3	2	
5	thumb screw M 10x20	250.9.9	2	
6	chuck handle	250.9.1	1	
7	pressure piece	250.9.8	1	
8	rubber sleeves for pressure piece	250.9.13	2	
10	collecting ring D 202	250.9.4	1	
11	sealing rubber D 202	250.9.6	1	
12	nut M 4	250.9.12	4	
13	cylinder screw M 4x6	250.9.11	4	
14	retaining ring D 202	250.9.5	1	
15	screw M 6x25	250.9.10	2	
16	nut flat M 6	250.3.7	2	

## 19-20 Drill water suction ring cpl. KF 250 + chuck screw



### 19 Drill water suction ring D 132 + chuck screw

Item	Designation	Order no.	Piece	Price/Piece
1	thrust fork	250.9.7	1	
2	chuck fork D 132	150.8.3	1	
3	thumb screw M 10x20	250.9.9	2	
4	chuck screw	250.9.15	1	
5	alu cross handle M 12	250.4.3	1	
6	hexagon screw flat M 12x7	250.1.3	3	
7	screw M 12x160	250.9.16	1	
8	supporting plate D 12	250.9.17	1	
10	collecting ring D 132	150.8.4	1	
11	sealing rubber D 132	150.8.6	1	
12	nut M 4	250.9.12	3	
13	cylinder screw M 4x6	250.9.11	3	
14	retaining ring D 132	150.8.5	1	
15	screw M 6x25	250.9.10	2	
16	nut flat M 6	250.3.7	2	

### 20 Drill water suction ring D 202 + chuck screw

Item	Designation	Order no.	Piece	Price/Piece
1	thrust fork	250.9.7	1	
2	chuck fork D 202	250.9.3	1	
3	thumb screw M 10x20	250.9.9	1	
4	chuck screw	250.9.15	1	
5	alu cross handle M 12	250.4.3	1	
6	hexagon screw flat M 12x7	250.1.3	3	
7	screw M 12x160	250.9.16	1	
8	supporting plate D 12	250.9.17	1	
10	collecting ring D 202	250.9.4	1	
11	sealing rubber D 202	250.9.6	1	
12	nut M 4	250.9.12	4	
13	cylinder screw M 4x6	250.9.11	4	
14	retaining ring D 202	250.9.5	1	
15	screw M 6x25	250.9.10	2	
16	nut flat M 6	250.3.7	2	

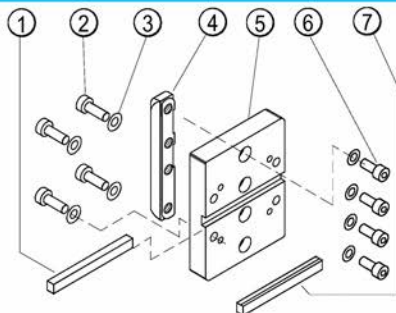
## 21-22

9	Membrane D 132	150.8.7	1	
9	Membrane D 202	250.8.7	1	



## Drilling motor plate cpl. KF 250

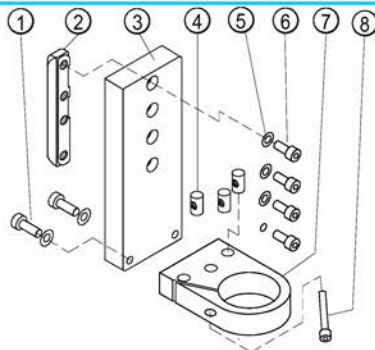
23



Item	Designation	Order no.	Piece	Price/Piece
1	Feather 10x8x100 mm	250.1.19	1	
2	hexagonal screw M 8x25	250.1.34	4	
3	washer D 8	250.1.29	8	
4	straining beam M 8x120	150.1.17	1	
5	Drilling motor plate	150.1.18	1	
6	hexagonal screw M 8x18	150.1.21	4	
7	Feather 9,5x8x100 mm	250.1.20	1	

## Instep neck adapter cpl. KF 250

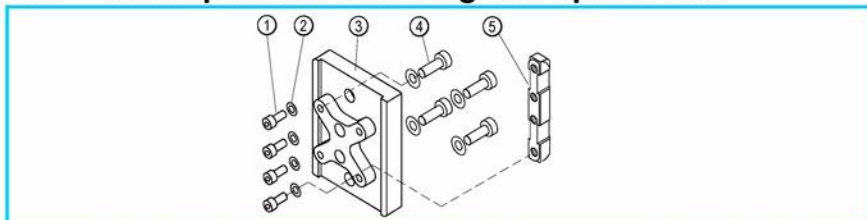
24



Item	Designation	Order no.	Piece	Price/Piece
1	hexagonal screw M 8x45 mm	150.11.3	2	
2	straining beam	150.11.7	1	
3	instep neck adapter plate	150.11.2	1	
4	cross threaded bolts	150.11.5	3	
5	spring washer D 8	250.1.29	7	
6	hexagonal screw M 8x22	150.1.31	4	
7	instep neck adapter body	150.11.1	1	
8	hexagonal screw M 8x50	150.11.4	1	

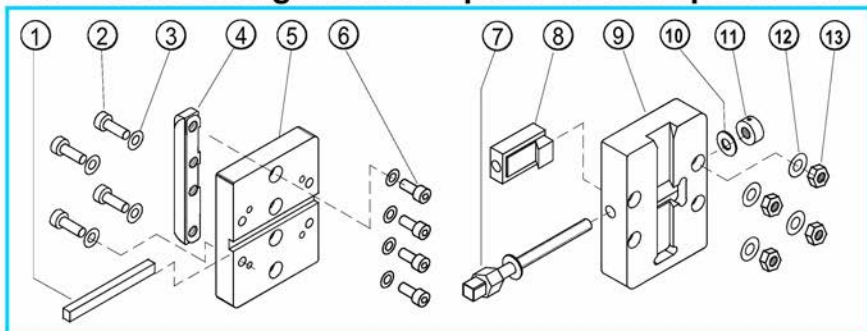


## 25 Motor plate for Hilti Engines cpl. KF 250



Item	Designation	Order no.	Piece	Price/Piece
1	hexagon socket screw M 8x20 / 12.9	250.1.21	4	
2	washer D 8	250.1.29	8	
3	Motor plate for Hilti Engines	200.1.18 H	1	
4	hexagon socket screw M 8x40	250.1.34	4	
5	Clamping bolt M 8x120	150.1.17	1	

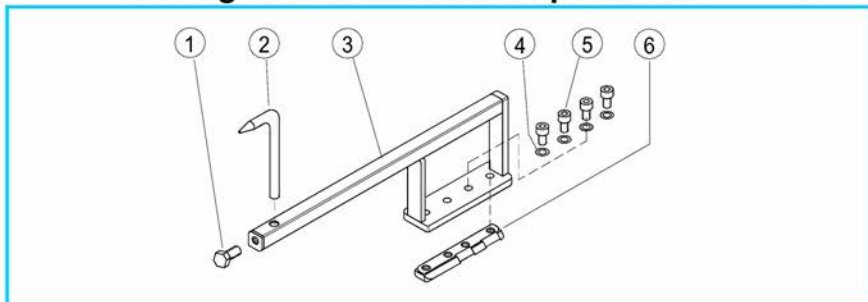
## 26 Quick change distance piece 50 mm cpl. KF 250



Item	Designation	Order no.	Piece	Price/Piece
	<b>Drilling motor plate cpl.</b>	<b>150.1.18 BG K</b>	<b>1</b>	
1	Feather 10x8x100 mm	250.1.19	1	
2	hexagonal screw M 8x40	250.1.34	4	
3	washer D 8	250.1.29	8	
4	Clamping bolt M 8x120	150.1.17	1	
5	Drilling motor plate	150.1.18	1	
6	hexagonal screw M 8x18	150.1.21	4	
	<b>Ground drilling motor plate cpl.</b>	<b>150.1.19 K</b>	<b>1</b>	
7	adjusting screw	150.1.15	1	
8	stretching block	150.1.16	1	
9	groundplate housing	150.1.19	1	
10	washer D10	150.5.6	2	
11	adjusting ring M 10	150.1.28	1	
12	Feather D 8	250.1.29	4	
13	hexagonal screw selflocking M 8	250.3.14	4	

## Drilling middles indicator cpl. KF 250

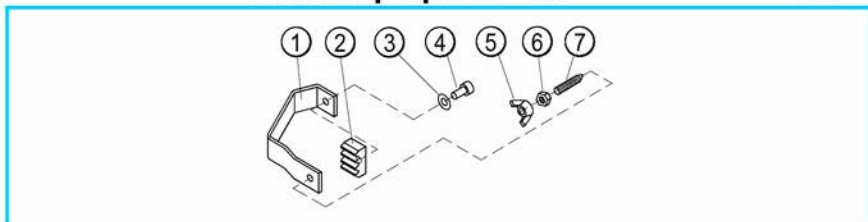
27



Item	Designation	Order no.	Piece	Price/Piece
1	hexagonal screw M 10x20	250.10.4	1	
2	drilling middles indicator	250.10.5	1	
3	drilling middles indicator body	250.10.2	1	
4	Feather D 8	250.1.29	4	
5	hexagonal screw M 8x18	150.1.21	4	
6	straining beam M 8x120	150.1.17	1	

## End stop cpl. KF 250

28



Item	Designation	Order no.	Piece	Price/Piece
1	end stop body 70x70mm	150.6.31	1	
2	gear rack Mo 1,5	150.6.32	1	
3	washer D 6	150.6.4	1	
4	hexagonal screw M 6x12	150.6.3	1	
5	thumb screw M 8	150.6.33	1	
6	hexagonnut flat M 8	150.6.34	1	
7	Hexagonthreaded screw M 8x25	150.6.35	1	



The company Fleika Maschinen- und Anlagenbau GmbH & Co KG is a privately owned medium-sized family business in the plant and machinery sector. From years of experience in the field of concrete processing with diamond tools and machines, Mr. Kastner developed a novel roller guiding system for core drilling stands, which was granted patent protection in 1997. In 1995, Mr. Kastner decided to dissolve his drilling and sawing business and to found the company Fleika Maschinen und Anlagenbau GmbH & Co KG.

By tapping into over 20 years of practical experience as an independent concrete driller, drill stand designer and manufacturer, Mr. Kastner, in time-consuming development efforts, has invented and constructed the distinctive, labour-saving parts.

Through his own daily work on the stands, the head of the company guarantees a sophisticated and unique quality product. New ideas for improving the stands are immediately realized and incorporated into the equipment. The family ensures a high level of service and continuity.

---

The originals - drill stand, accessories and spare parts - are only available through our **distribution partners**



**Fleika Maschinen und Anlagenbau GmbH Co. KG**

Koblberg 1, D-83564 Soyen, Vertrieb: Alois Blüml, Tel: 0049-8071-103228 - Fax: 0049-8071-103256