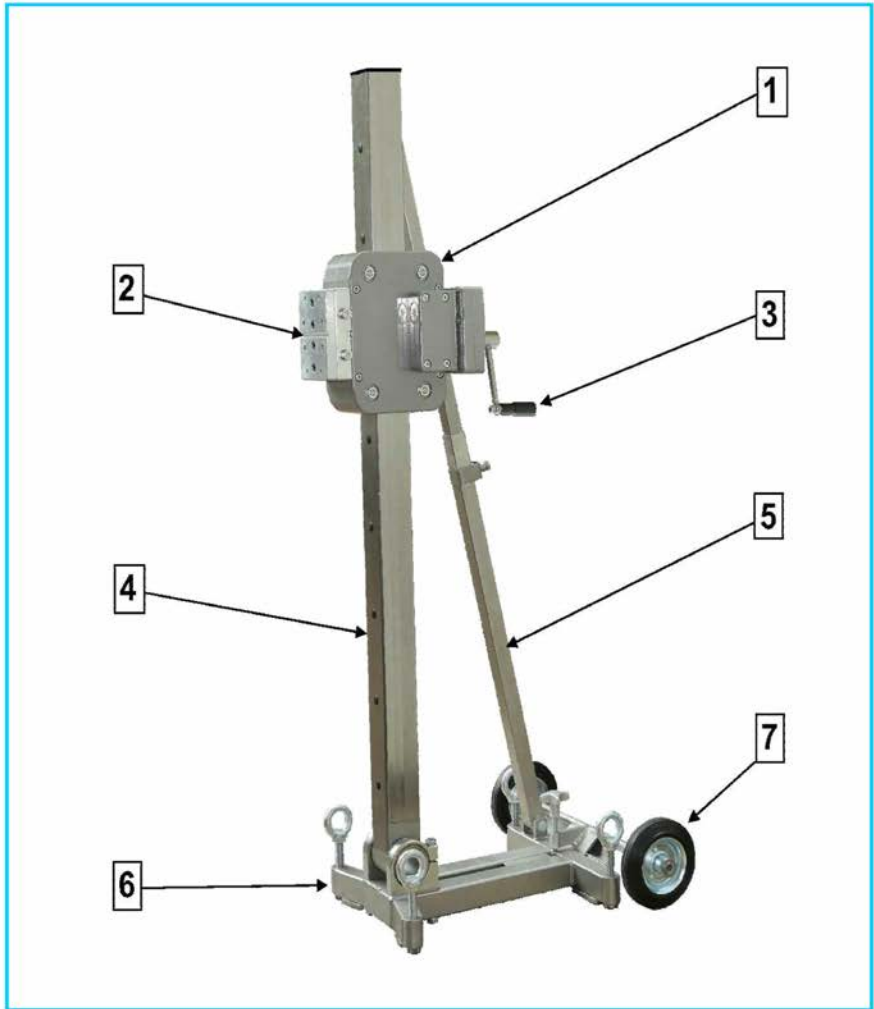
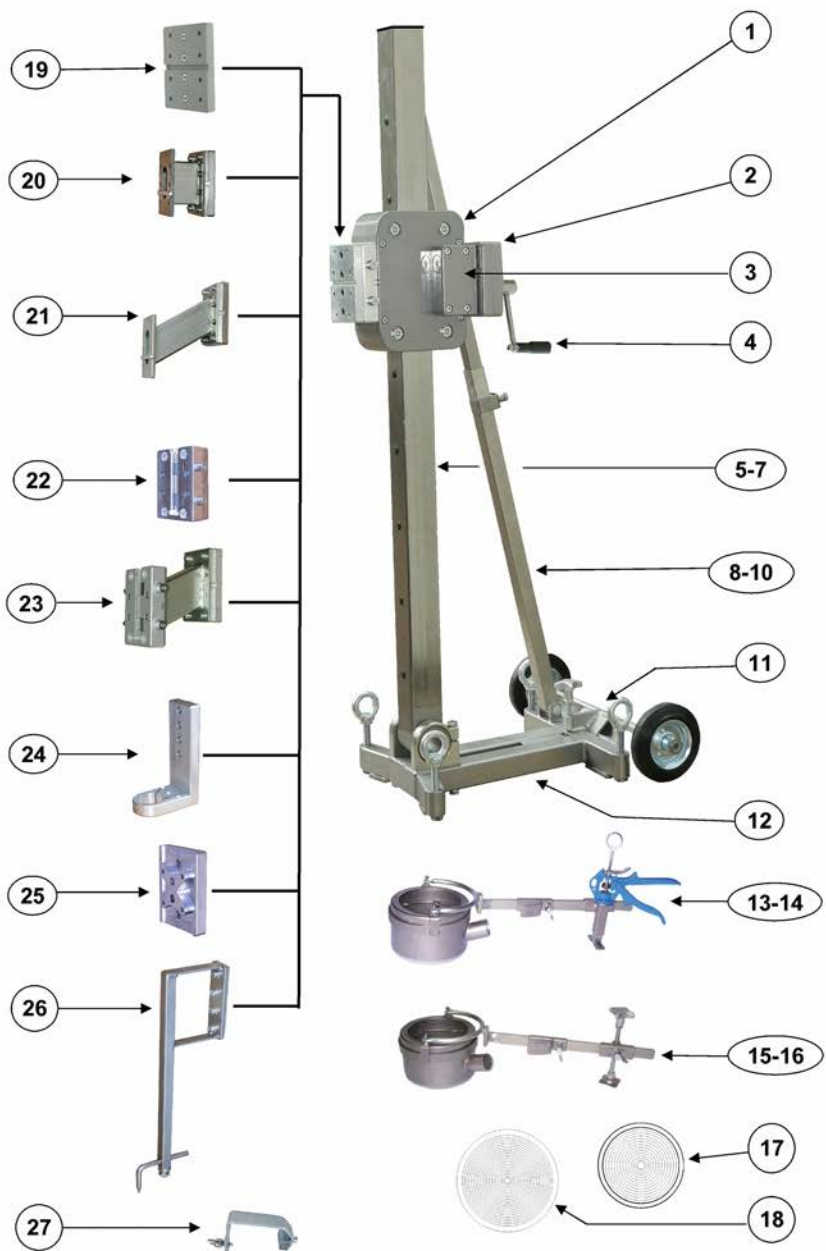


## Drill Stands KF 700



Item	Designation	Order no.	Piece	Price/Piece
	Drill KF 700 with colour cpl.	KF 700 K	1	
1	Carraige cpl. with gear (silvergrey)	700.1.2.3 K	1	
2	Drilling motor plate cpl.	700.1.18 K	1	
3	Crank cpl.	700.5.0 K	1	
4	Column 1400 mm with flexible bracket cpl.	600.6.014 G.K	1	
5	Support 1400 mm cpl.	700.19.00 K	1	
6	Foot plate steel cpl.	700.9.0 K	1	
7	Wheel Kit cpl.	700.1.06 K	1	

# Drill Stands KF 700



## components and parts list KF 700

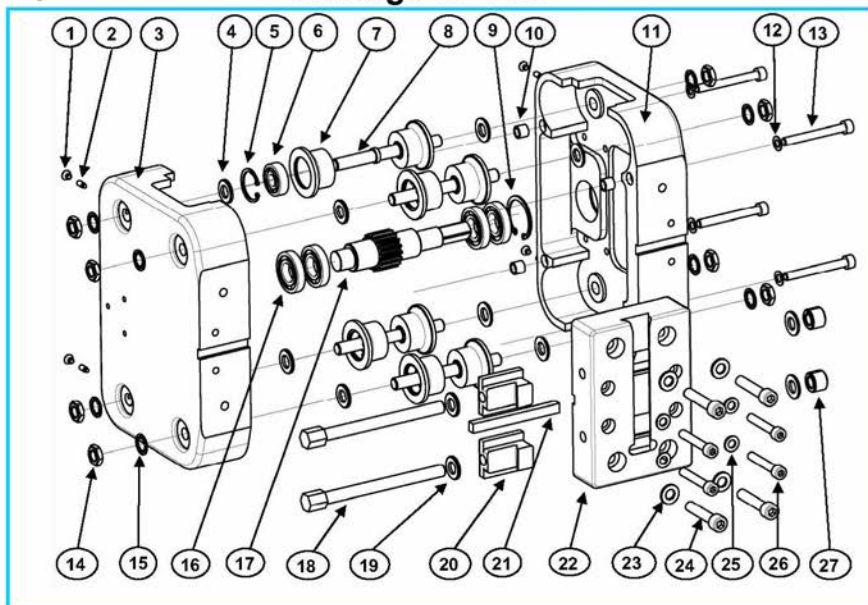
Item	Designation	Order no.	Piece	Price/Piece
1	Carraige cpl. with gear (silvergrey)	700.1.2.3 K	1	
2	Front gear cpl.	700.3.0 K	1	
3	Worm gears cpl.	700.2.0 K	1	
4	Crank cpl.	700.5.0 K	1	
5	Column 1000 mm with flexible bracket cpl.	700.6.0 G.K.	1	
6	Column 1400 mm with flexible bracket cpl.	600.6.014 G.K	1	
7	Column 2000 mm with flexible bracket cpl.	700.6.020 G.K	1	
8	Support 1000 mm cpl.	700.18.00 K	1	
9	Support 1400 mm cpl.	700.19.00 K	1	
10	Support 2000 mm cpl.	700.20.00 K	1	
11	Wheel Kit cpl.	700.1.06 K	1	
12	Foot plate steel cpl.	700.9.0 K	1	
13	Drill water suction ring + chuck handle D132 cpl.	250.8.0 K	1	
14	Drill water suction ring + chuck handle D202 cpl.	250.9.0 K	1	
15	Drill water suction ring + chuck screw D132 cpl.	250.8.01 K	1	
16	Drill water suction ring + chuck screw D202 cpl.	250.9.01 K	1	
17	Membrane D 132	150.8.7	1	
18	Membrane D 202	250.8.7	1	
19	Drilling motor plate cpl.	700.1.18 K	1	
20	Spacer 110 mm cpl.	400.2.0 BD K	1	
21	Spacer 190 mm cpl.	600.2.0 BD K	1	
22	Quick change distance piece 50 mm cpl.	600.1.19 BG K	1	
23	Quick change distance piece 170 mm cpl.	600.2.01 BDG K	1	
24	Instep neck adapter cpl.	150.11.0 K	1	
25	Motor plate for Hiliti Engines cpl.	400.1.17 H K	1	
26	Drilling middles indicator, m.d. 115-150 mm cpl.	250.10.2 K	1	
27	End stop cpl.	250.6.30 K	1	

Copyright © 2015 by FleiKa Maschinen- und Anlagenbau GmbH & Co KG

Information: We reserve to make changes of our Drill stands.

1

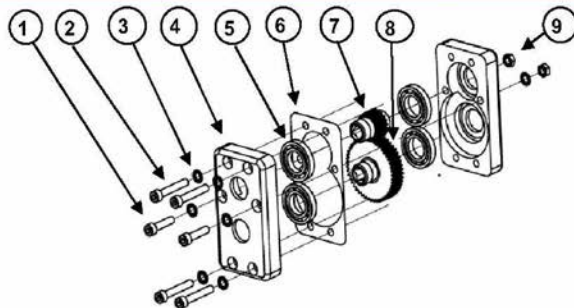
## Carriage KF 700



Item	Designation	Order no.	Piece	Price/Piece
	<b>Carriage KF 700</b>	<b>700.1.0 K</b>	<b>1</b>	
1	covering screw M 6x8	250.1.12	4	
2	grub screw M 6x20	250.1.11	4	
3	housing left	700.1.01 L	1	
4	washer D 12x2,7	700.1.04	8	
	<b>Rollers with ball bearing cpl.</b>	<b>600.1.5 K</b>	<b>8</b>	
5	snap ring D 32	250.1.5.1	8	
6	ball bearing D 32x12	250.1.6	8	
7	rollers	600.1.5	8	
8	axis	600.1.2	4	
9	snap ring D 42	700.1.05	1	
10	fitting sleeves D 10x12	1000.1.2	4	
11	housing right	700.1.01 R	1	
12	spring washer D 8	250.1.29	4	
13	nut M 8x80	700.1.08	4	
14	nut flat M 12x7	250.1.3	8	
15	spring washer D 12	250.1.4	8	
16	ball bearing D 42x20	700.1.06	4	
17	splin shaft	700.1.07	1	
18	adjusting screw M 10x131	250.1.15	2	
19	washer D 10	150.5.6	8	
20	stretching block	250.1.16	2	
21	feather 10x8x100 mm	250.1.19	1	
22	Ground drill plate housing	700.1.19	1	
23	spring washer D 8	250.1.29	4	
24	screw M 8x40	700.1.10	4	
25	spring washer D 10	250.16.05	4	
26	screw M 10x35	700.1.09	4	
27	adjusting ring M 10	150.1.28	2	

## Front gear cpl. KF 700

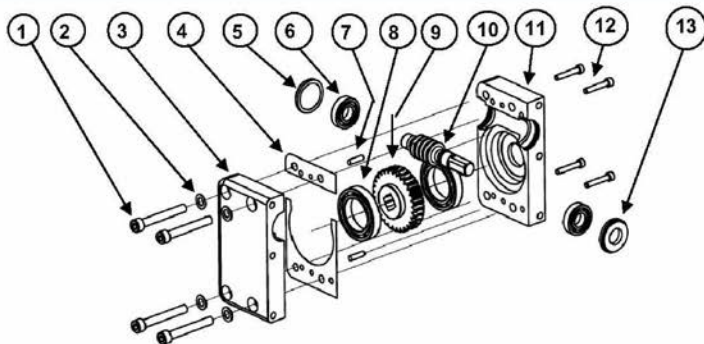
2



Item	Designation	Order no.	Piece	Price/Piece
1	screw M 8x35	250.1.33	2	
2	screw M 8x50	150.11.4	4	
3	spring washer D 8	250.1.29	8	
4	housing front gear	700.3.1	1	
5	ball bearing 25 mm	1000.3.5	4	
6	seal	1000.3.7	1	
7	Gear ratio 20 Z	1000.3.3	1	
8	Gear ratio 48 Z	1000.3.4	1	
9	nut M 8	1000.3.9	2	

## Worm gears cpl. KF 700

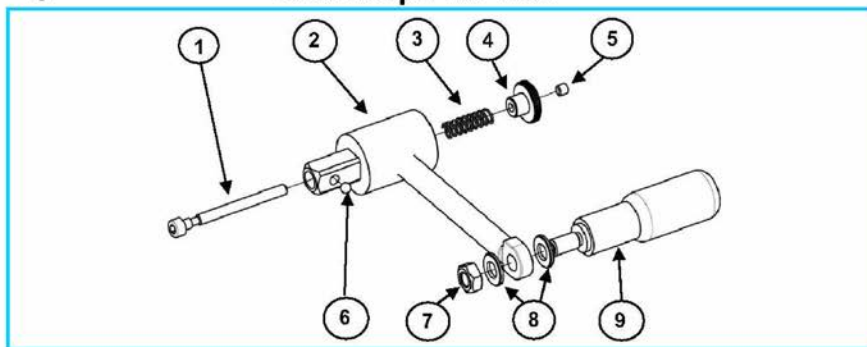
3



Item	Designation	Order no.	Piece	Price/Piece
1	screw M 8x55	700.2.8	4	
2	spring washer D 8	250.1.29	4	
3	housing worm gears outside	700.2.1A	1	
4	seal	700.2.10	1	
5	endcap 34 mm	700.2.5	1	
6	ball bearing D 32 mm	700.2.3	2	
7	cylindrical pin M 5x20	700.2.12	3	
8	ball bearing D 55	700.2.7	2	
9	worm gears	700.2.6	1	
10	worm shaft	700.2.2	1	
11	housing worm gears inside	700.2.1 I	1	
12	screw M 5x25	700.2.9	4	
13	endcap 34x16 mm	700.2.4	1	

4

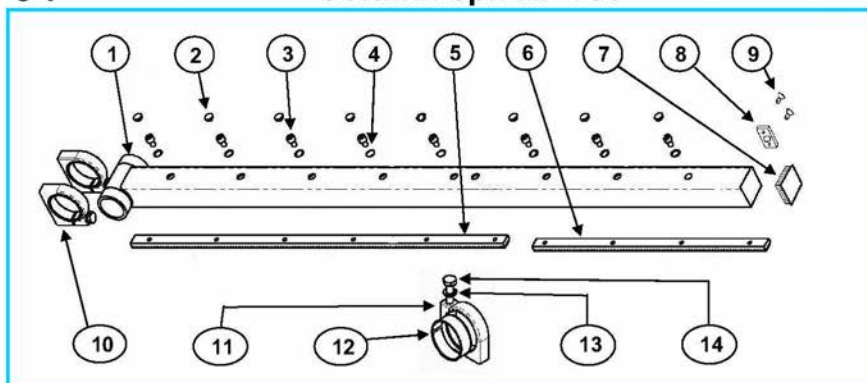
## Crank cpl. KF 700



Item	Designation	Order no.	Piece	Price/Piece
1	pressure pin screw M 5x60	1000.5.3	1	
2	crank body	700.5.1	1	
3	compression spring	1000.5.5	1	
4	push bottom locking nut M 5	1000.5.6	1	
5	screw M 5x5	1000.5.9	1	
6	ball D 5	1000.5.4	1	
7	nut self-locking M 8	250.3.14	1	
8	washer D 8	1000.5.8	2	
9	rotary handle	1000.5.2	1	

5-7

## Column cpl. KF 700



5

## Column 1000 mm cpl. + flexible bracket

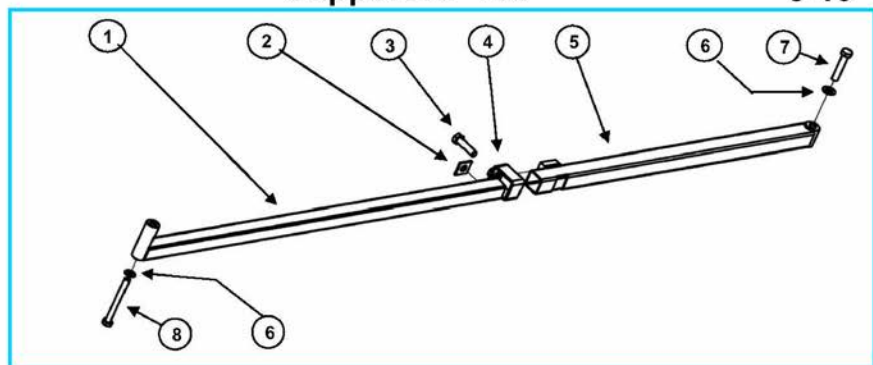
Item	Designation	Order no.	Piece	Price/Piece
	Column 1000 cpl. with flexible bracket	700.6.0 G.K	1	
1	guide bar 70x1000 mm	700.6.10	1	
2	blindlystopel D 13	250.6.5	6	
3	screw M 8x12	250.6.3	6	
4	retainer ring D 8	250.6.4	6	
5	gear rack Mo.2x790 mm	250.6.2	1	
7	cover cap	250.6.17	1	
8	mounting plate	700.6.2	1	
9	screw	700.6.3	2	
10	Flexible bracket cpl.	250.5.0 K	2	
11	flexible bracket	250.5.1	2	
12	brass ring	250.5.2	2	
13	washer D 12	250.5.6	2	
14	screw M 12x50	250.5.4	2	

**Column 1400 mm cpl. + flexible bracket****6**

Item	Designation	Order no.	Piece	Price/Piece
	<b>Column 1400 cpl. with flexible bracket</b>	<b>700.6.1.14 G.K</b>	<b>1</b>	
1	guide bar 70x1400 mm	700.6.1.14	1	
2	blindlystopse D 13	250.6.5	10	
3	screw M 8x12	250.6.3	10	
4	retainer ring D 8	250.6.4	10	
5	gear rack Mo.2x790 mm	250.6.2	1	
6	gear rack Mo.2x484 mm	600.6.21	1	
7	cover cap	250.6.17	1	
8	mounting plate	700.6.2	1	
9	screw	700.6.3	2	
10	<b>Flexible bracket cpl.</b>	<b>250.5.0 K</b>	<b>2</b>	
11	flexible bracket	250.5.1	2	
12	brass ring	250.5.2	2	
13	washer D 12	250.5.6	2	
14	screw M 12x50	250.5.4	2	

**Column 2000 mm cpl. + flexible bracket****7**

Item	Designation	Order no.	Piece	Price/Piece
	<b>Column 2000 cpl. with flexible bracket</b>	<b>700.6.1.20 G.K</b>	<b>1</b>	
1	guide bar 70x2000 mm	700.6.1.20	1	
2	blindlystopse D 13	250.6.5	14	
3	screw M 8x12	250.6.3	14	
4	retainer ring D 8	250.6.4	14	
5	gear rack Mo.2x790 mm	250.6.2	2	
6	gear rack Mo.2x306 mm	600.6.22	1	
7	cover cap	250.6.17	1	
8	mounting plate	700.6.2	1	
9	screw	700.6.3	2	
10	<b>Flexible bracket cpl.</b>	<b>250.5.0 K</b>	<b>2</b>	
11	flexible bracket	250.5.1	2	
12	brass ring	250.5.2	2	
13	washer D 12	250.5.6	2	
14	screw M 12x50	250.5.4	2	

**Support KF 700****8-10****Support 1000 mm****8**

Item	Designation	Order no.	Piece	Price/Piece
1	supporting tube 600 mm	700.18.08	1	
2	thrust collar 30x35xD12	400.18.06	1	
3	screw M 12x30	400.18.05	1	
4	clamp 37x45 mm	400.18.03	1	
5	supporting sleeve 700 mm	700.18.09	1	
6	spring washer D 12	700.5.4	2	
7	screw M 12x60	700.5.3	1	
8	screw M 12x110	700.18.04	1	

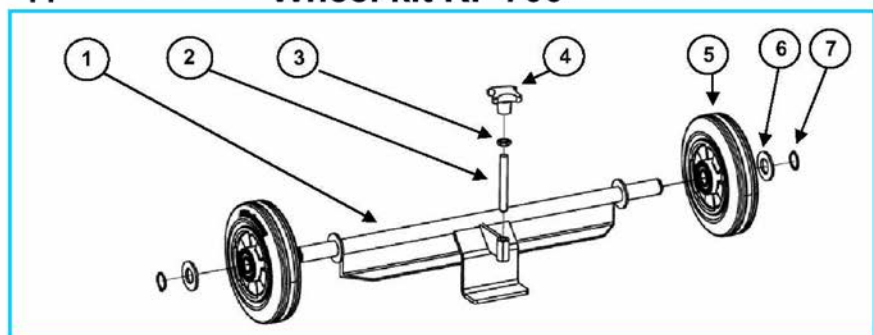
## 9 Support 1400 mm

Item	Designation	Order no.	Piece	Price/Piece
1	supporting tube 950 mm	700.19.08	1	
2	thrust collar 30x35xD12	400.18.06	1	
3	screw M 12x30	400.18.05	1	
4	clamp 37x45 mm	400.18.03	1	
5	supporting sleeve 700 mm	700.18.09	1	
6	spring washer D 12	700.5.4	2	
7	screw M 12x60	700.5.3	1	
8	screw M 12x110	700.18.04	1	

## 10 Support 2000 mm

Item	Designation	Order no.	Piece	Price/Piece
1	supporting tube 1550 mm	700.20.08	1	
2	thrust collar 30x35xD12	400.18.06	1	
3	screw M 12x30	400.18.05	1	
4	clamp 37x45 mm	400.18.03	1	
5	supporting sleeve 700 mm	700.18.09	1	
6	spring washer D 12	700.5.4	2	
7	screw M 12x60	700.5.3	1	
8	screw M 12x110	700.18.04	1	

## 11 Wheel kit KF 700

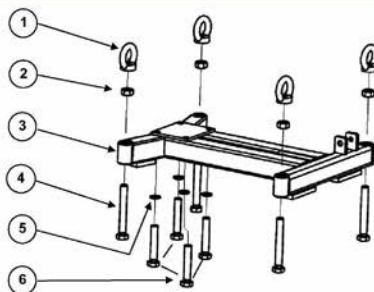


Item	Designation	Order no.	Piece	Price/Piece
1	wheel kit body	700.1.06	1	
2	threaded bolts M 12	250.4.14	1	
3	nut flat M 12x7	250.1.3	1	
4	star knob M 12	250.4.3	1	
5	wheels D 160	250.4.8	2	
6	washer D 20	250.4.9	2	
7	snap rings D 20	250.4.10	2	



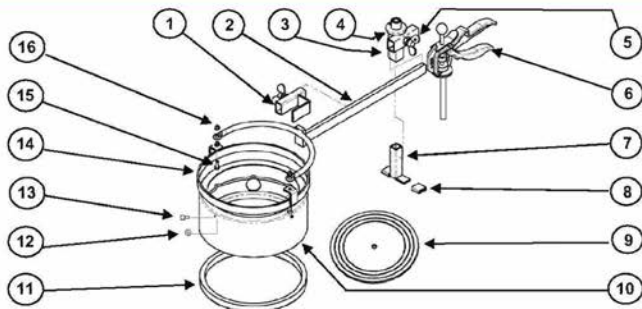
## Foot plate steel KF 700

12



Item	Designation	Order no.	Piece	Price/Piece
1	eye nut M 16	1000.9.3	4	
2	nut flat M 16	1000.1.7	4	
3	foot plate body	700.4.1 ST	1	
4	adjusting screw M 16x120	700.4.2	4	
5	retainer ring D 12	250.5.5	4	
6	screw M 12x70	600.5.3	4	

## Drill water suction ring + chuck handle KF 700 13-14



## Drill water suction ring D 132 + chuck handle

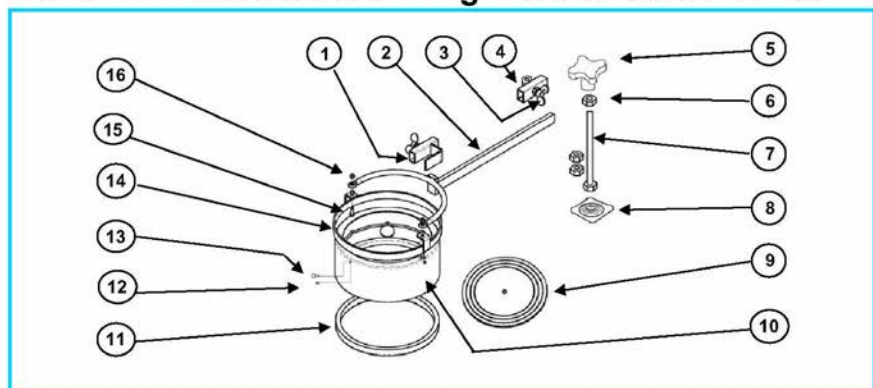
13

Item	Designation	Order no.	Piece	Price/Piece
1	thrust fork	250.9.7	1	
2	chuck fork D 132	150.8.3	1	
3	bracing device	250.9.2	1	
4	screw M 6x12	150.6.3	2	
5	thumb screw M 10x20	250.9.9	2	
6	chuck handle	250.9.1	1	
7	pressure piece	250.9.8	1	
8	rubber sleeves for pressure piece	250.9.13	2	
10	collecting ring D 132	150.8.4	1	
11	sealing rubber D 132	150.8.6	1	
12	nut M 4	250.9.12	3	
13	cylinder screw M 4x6	250.9.11	3	
14	retaining ring D 132	150.8.5	1	
15	screw M 6x25	250.9.10	2	
16	nut flat M 6	250.3.7	4	

## 14 Drill water suction ring D 202 + chuck handle

Item	Designation	Order no.	Piece	Price/Piece
1	thrust fork	250.9.7	1	
2	chuck fork D 202	250.9.3	1	
3	bracing device	250.9.2	1	
4	screw M 6x12	150.6.3	2	
5	thumb screw M 10x20	250.9.9	2	
6	chuck handle	250.9.1	1	
7	pressure piece	250.9.8	1	
8	rubber sleeves for pressure piece	250.9.13	2	
10	collecting ring D 202	250.9.4	1	
11	sealing rubber D 202	250.9.6	1	
12	nut M 4	250.9.12	4	
13	cylinder screw M 4x6	250.9.11	4	
14	retaining ring D 202	250.9.5	1	
15	screw M 6x25	250.9.10	2	
16	nut flat M 6	250.3.7	4	

## 15-16 Drill water suction ring + chuck screw KF700



## 15 Drill water suction ring D 132 + chuck screw

Item	Designation	Order no.	Piece	Price/Piece
1	thrust fork	250.9.7	1	
2	chuck fork D 132	150.8.3	1	
3	thumb screw M 10x20	250.9.9	2	
4	chuck screw	250.9.15	1	
5	alu cross handle M 12	250.4.3	1	
6	hexagon screw flat M 12x7	250.1.3	3	
7	screw M 12x160	250.9.16	1	
8	supporting plate D 12	250.9.17	1	
10	collecting ring D 132	150.8.4	1	
11	sealing rubber D 132	150.8.6	1	
12	nut M 4	250.9.12	3	
13	cylinder screw M 4x6	250.9.11	3	
14	retaining ring D 132	150.8.5	1	
15	screw M 6x25	250.9.10	2	
16	nut flat M 6	250.3.7	4	

## Drill water suction ring D 202 + chuck screw

**16**

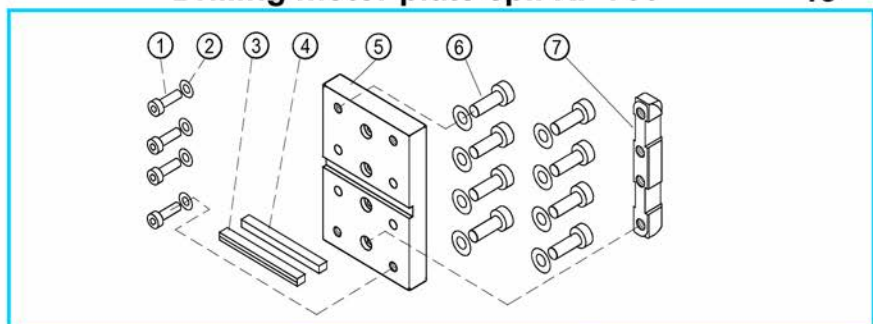
Item	Designation	Order no.	Piece	Price/Piece
1	thrust fork	250.9.7	1	
2	chuck fork D 202	250.9.3	1	
3	thumb screw M 10x20	250.9.9	2	
4	chuck screw	250.9.15	1	
5	alu cross handle M 12	250.4.3	1	
6	hexagon screw flat M 12x7	250.1.3	3	
7	screw M 12x160	250.9.16	1	
8	supporting plate D 12	250.9.17	1	
10	collecting ring D 202	250.9.4	1	
11	sealing rubber D 202	250.9.6	1	
12	nut M 4	250.9.12	4	
13	cylinder screw M 4x6	250.9.11	4	
14	retaining ring D 202	250.9.5	1	
15	screw M 6x25	250.9.10	2	
16	nut flat M 6	250.3.7	4	

**17-18**

9	Membrane 132	150.8.7	1	
9	Membrane 202	250.8.7	1	

## Drilling motor plate cpl. KF 700

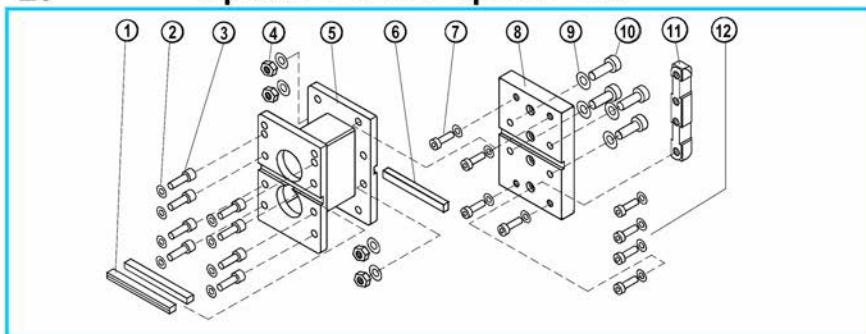
**19**



Item	Designation	Order no.	Piece	Price/Piece
1	screw M 8x20 / 12.9	250.1.21	4	
2	spring washer D 8	250.1.29	12	
3	feather 9,5x8x100 mm	250.1.20	1	
4	feather 10x8x100 mm	250.1.19	1	
5	drilling motor plate	700.1.18	1	
6	screw M 8x30	250.1.30	8	
7	straining beam	250.1.17	1	

20

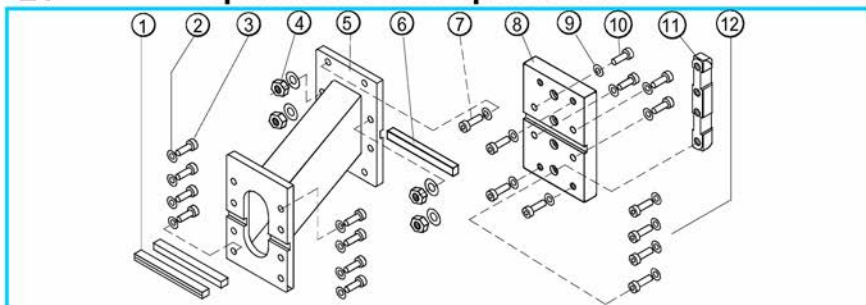
## Spacer 110 mm cpl. KF 700



Item	Designation	Order no.	Piece	Price/Piece
	<b>Spacer 90 mm cpl.</b>	<b>400.2.0</b>	<b>1</b>	
1	feather 9.5x8x100 mm	250.1.20	1	
2	spring washer D 8	250.1.29	12	
3	screw M 8x30	250.1.30	8	
4	nut self-locking M 8	250.3.14	4	
5	spacer body 90 mm	400.2.0	1	
6	feather 10x8x100 mm	250.1.19	1	
	<b>Drilling motor plate cpl.</b>	<b>700.1.18 K</b>	<b>1</b>	
7	screw M 8x25	150.1.30	4	
8	Drilling motor plate	600.1.18	1	
9	spring washer D 8	250.1.29	12	
10	screw M 8x30	250.1.30	4	
11	clamping bolt	250.1.17	1	
12	screw M 8x20 / 12.9	250.1.21	4	

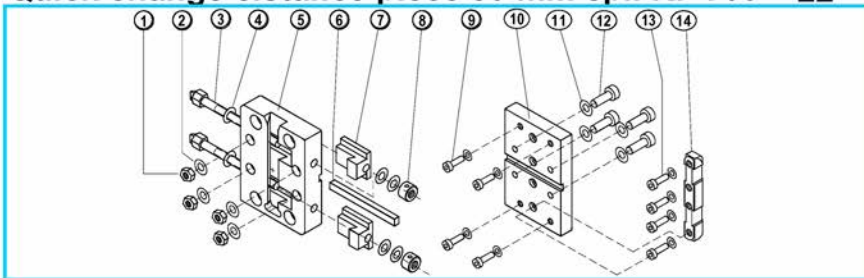
21

## Spacer 190 mm cpl. KF 700



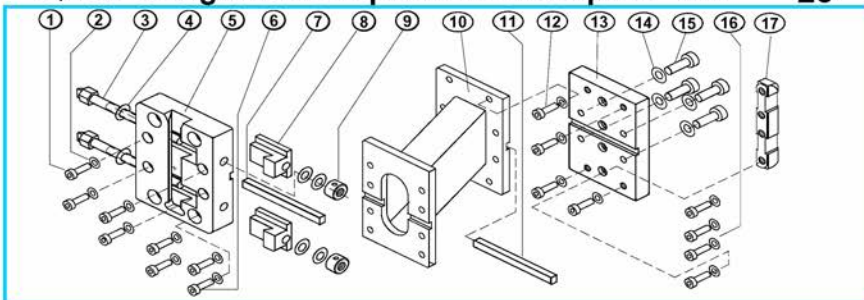
Item	Designation	Order no.	Piece	Price/Piece
	<b>Spacer 170 mm cpl.</b>	<b>600.2.0 K</b>	<b>1</b>	
1	feather 9.5x8x100 mm	250.1.20	1	
2	spring washer D 8	250.1.29	12	
3	screw M 8x30	250.1.30	8	
4	nut self-locking M 8	250.3.14	4	
5	spacer body 170 mm	600.2.0	1	
6	feather 10x8x100 mm	250.1.19	2	
	<b>Drilling motor plate cpl.</b>	<b>600.1.18 BD K</b>	<b>1</b>	
7	screw M 8x25	150.1.30	4	
8	Drilling motor plate	600.1.18	1	
9	spring washer D 8	250.1.29	12	
10	screw M 8x30	250.1.30	4	
11	clamping bolt	250.1.17	1	
12	screw M 8x20 / 12.9	250.1.21	4	

## Quick change cistance piece 50 mm cpl. KF 700 22



Item	Designation	Order no.	Piece	Price/Piece
	<b>Ground drilling motor plate cpl.</b>	<b>600.1.19 K</b>	<b>1</b>	
1	hexagonal self-locking nut M 8	250.3.14	4	
2	spring washer D 8	250.1.29	4	
3	clamping screw	250.1.15	2	
4	washer D 10	150.5.6	6	
5	groundplate housing	600.1.19	1	
6	feather 10x8x100 mm	250.1.19	1	
7	stretching block	250.1.16	2	
8	collar M 10	150.1.28	2	
9	hexagonal screw M 8x30	250.1.30	4	
	<b>Drilling motor plate cpl.</b>	<b>600.1.18 BG K</b>	<b>1</b>	
10	Drilling motor plate	600.1.18	1	
11	spring washer D 8	250.1.29	12	
12	hexagonal screw M 8x40	700.1.32	4	
13	hexagonal screw M 8x20 / 12.9	250.1.21	4	
14	clamping bolt	250.1.17	1	

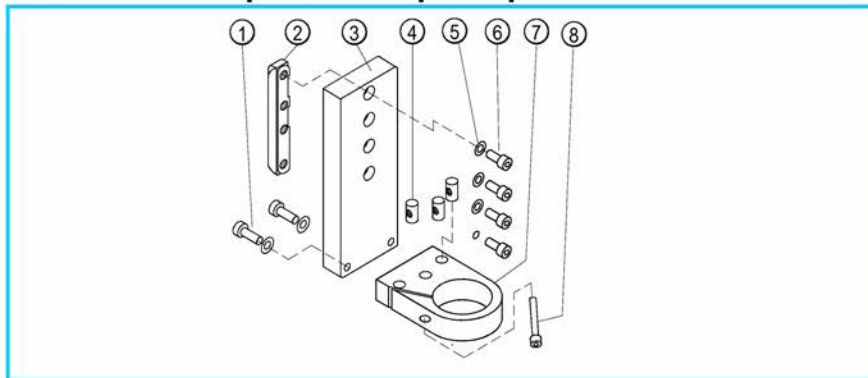
## Quick change distance piece 170 mm cpl. KF 700 23



Item	Designation	Order no.	Piece	Price/Piece
	<b>Ground drilling motor plate cpl.</b>	<b>600.1.19 K</b>	<b>1</b>	
1	hexagonal screw M 8x30	250.1.30	4	
2	spring washer D 8	250.1.29	12	
3	clamping screw M 10x131	250.1.15	2	
4	washer D 10	150.5.6	6	
5	groundplate housing	600.1.19	1	
6	hexagonal screw M 8x25	150.1.30	4	
7	feather 10x8x100 mm	250.1.19	1	
8	stretching block	250.1.16	2	
9	collar M 10	150.1.28	2	
10	spacer body 120 mm	600.2.01	1	
	<b>Drilling motor plate cpl.</b>	<b>600.1.18 BG K</b>	<b>1</b>	
11	feather 10x8x100 mm	250.1.19	1	
12	hexagonal screw M 8x25	150.1.30	4	
13	Drilling motor plate	600.1.18	1	
14	spring washer D 8	250.1.29	12	
15	hexagonal screw M 8x22	150.1.31	4	
16	hexagonal screw M 8x20 / 12.9	250.1.21	4	
17	clamping bolt	250.1.17	1	

24

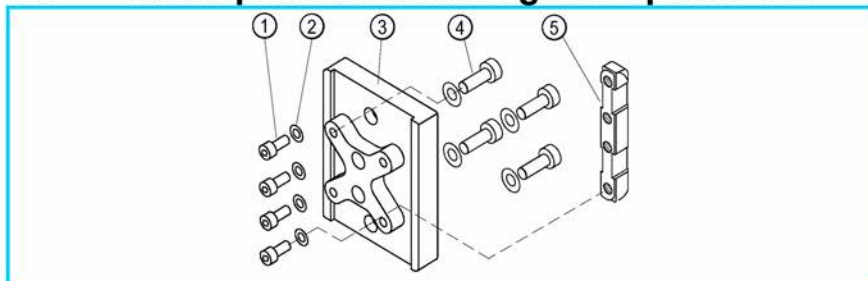
## Instep neck adapter cpl. KF 700



Item	Designation	Order no.	Piece	Price/Piece
1	hexagonal screw M 8x45	150.11.3	2	
2	straining beam	150.11.7	1	
3	instep neck adapter plate	150.11.2	1	
4	cross threaded bolts	150.11.5	3	
5	spring washer D 8	250.1.29	7	
6	hexagonal M 8x22	150.1.31	4	
7	instep neck adapter body	150.11.1	1	
8	hexagonal screw M 8x50	150.11.4	1	

25

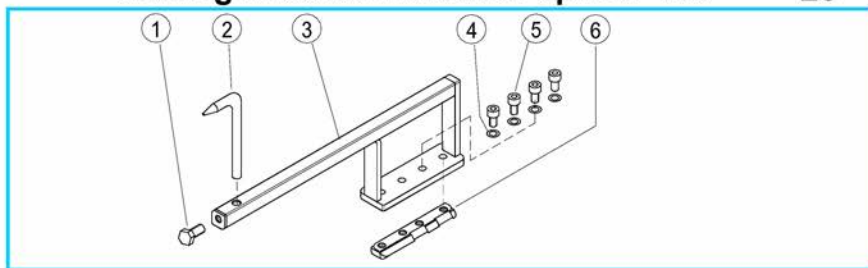
## Motor plate for Hilti Engines cpl. KF 700



Item	Designation	Order no.	Piece	Price/Piece
1	screw M 8x20 / 12.9	250.1.21	4	
2	spring washer D 8	250.1.29	8	
3	Motor plate for Hilti Engines	400.1.18 H	1	
4	screw M 8x40 / 12.9	1000.11.2	4	
5	clamping bolt	250.1.17	1	

## Drilling middles indicator cpl. KF 700

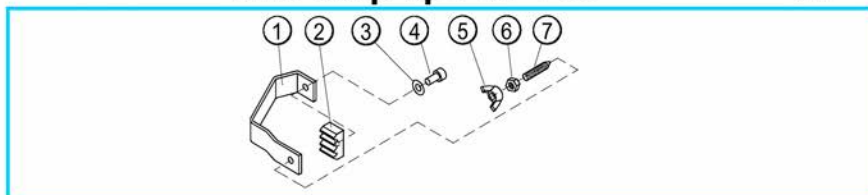
26



Item	Designation	Order no.	Piece	Price/Piece
1	screw M 10x20	250.10.4	1	
2	drilling middles indicator	250.10.5	1	
3	drilling middles indicator body	250.10.2	1	
4	spring washer D 8	250.1.29	4	
5	hexagonal screw M 8x18	150.1.21	4	
6	straining beam M 8x120	150.1.17	1	

## End stop cpl. KF 700

27



Item	Designation	Order no.	Piece	Price/Piece
1	end stop body 70x70mm	250.6.31	1	
2	gear rack Mo 2	250.6.32	1	
3	washer D 6	150.6.4	1	
4	hexagonal screw M 6x12	150.6.3	1	
5	thumb screw M 8	150.6.33	1	
6	hexagonnut flat M 8	150.6.34	1	
7	Hexagonthreaded screw M 8x25	150.6.35	1	



The company FleiKa Maschinen- und Anlagenbau GmbH & Co KG is a privately owned medium-sized family business in the plant and machinery sector. From years of experience in the field of concrete processing with diamond tools and machines, Mr. Kastner developed a novel roller guiding system for core drilling stands, which was granted patent protection in 1997. In 1995, Mr. Kastner decided to dissolve his drilling and sawing business and to found the company FleiKa Maschinen und Anlagenbau GmbH & Co KG.

By tapping into over 20 years of practical experience as an independent concrete driller, drill stand designer and manufacturer, Mr. Kastner, in time-consuming development efforts, has invented and constructed the distinctive, labour-saving parts.

Through his own daily work on the stands, the head of the company guarantees a sophisticated and unique quality product. New ideas for improving the stands are immediately realized and incorporated into the equipment. The family ensures a high level of service and continuity.

---

The originals - drill stand, accessories and spare parts - are only available through our **distribution partners**



**Fleika Maschinen und Anlagenbau GmbH Co. KG**

Koblberg 1, D-83564 Soyen, Vertrieb: Alois Blüml, Tel: 0049-8071-103228 - Fax: 0049-8071-103256